



**66B Premier Street Gymea NSW**

4 3 1

Designed for modern living and effortless entertaining, this newly completed four-bedroom duplex delivers a perfect balance of style, comfort, and practicality. Showcasing elegant interiors, premium finishes, and a thoughtfully designed layout, the home is enhanced by soft natural tones and an abundance of light throughout. Surrounded by tropical-inspired landscaping and highlighted by an eye-catching exterior, this residence offers a sophisticated lifestyle in a highly convenient location.

? Expansive open-plan living and dining zones featuring soaring ceilings and Velux skylights, flowing seamlessly to the outdoors

? Designer kitchen appointed with a stone island bench, butler's pantry, gas cooking, plus integrated fridge and

**Type** : Semi Detached  
**Price** : Auction  
**Land Size** : 332.15 sqm  
**View** : <https://www.jreproperty.com.au/sale/nsw/sutherlandland/gymea/residential/semi-detached/8702431>



**Luke Jeffree**  
02 9540 2222

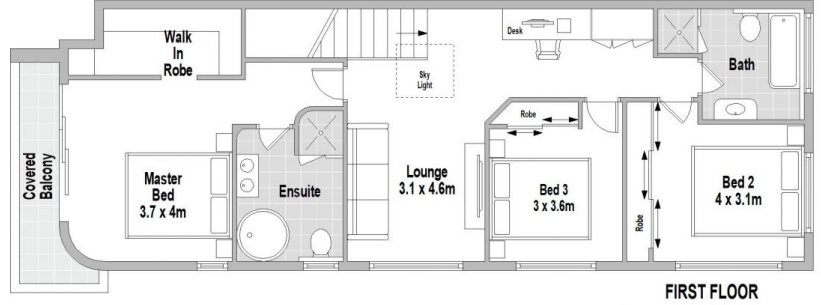


**Belinda Sanders**  
02 9540 2222

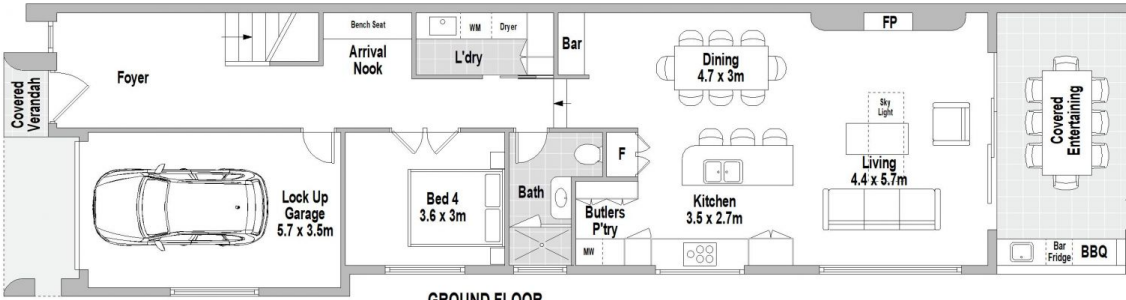
[For full version visit the website](https://www.jreproperty.com.au)



SITE PLAN (NOT TO SCALE)



FIRST FLOOR



GROUND FLOOR

66B Premier Street, Gymea



Scale in metres. Indicative only. Dimensions are approximate. All information contained herein is gathered from sources we believe to be reliable. However we cannot guarantee its accuracy and interested persons should rely on their own enquiries.