



2C Marina Crescent Gymea Bay NSW

3 2 2

Enjoying an elevated setting and located within walking distance to Gymea Bay Public School this family home has been well maintained and boasts spacious light filled interiors throughout.

Set on 581.7 sqm parcel of land and providing a family friendly rear garden with manicured lawns and established gardens.

Positioned in a quiet, sought after neighbourhood, this property provides a great opportunity in a popular pocket of Gymea Bay.

? Spacious living and dining area streaming with natural

[For full version visit the website](https://www.jreproperty.com.au/sale/nsw/sutherland/gymea-bay/residential/house/8690551)

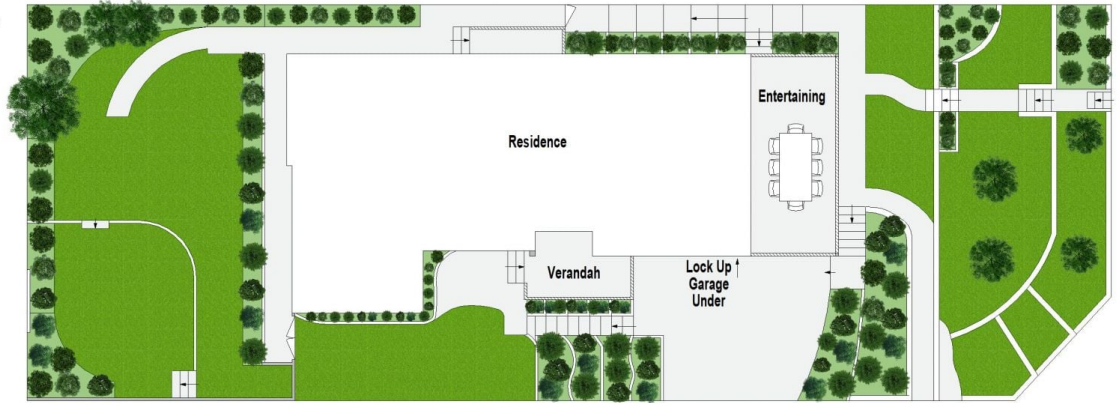
Type : House
Price : Auction
Land Size : 581.7 sqm
View : <https://www.jreproperty.com.au/sale/nsw/sutherland/gymea-bay/residential/house/8690551>



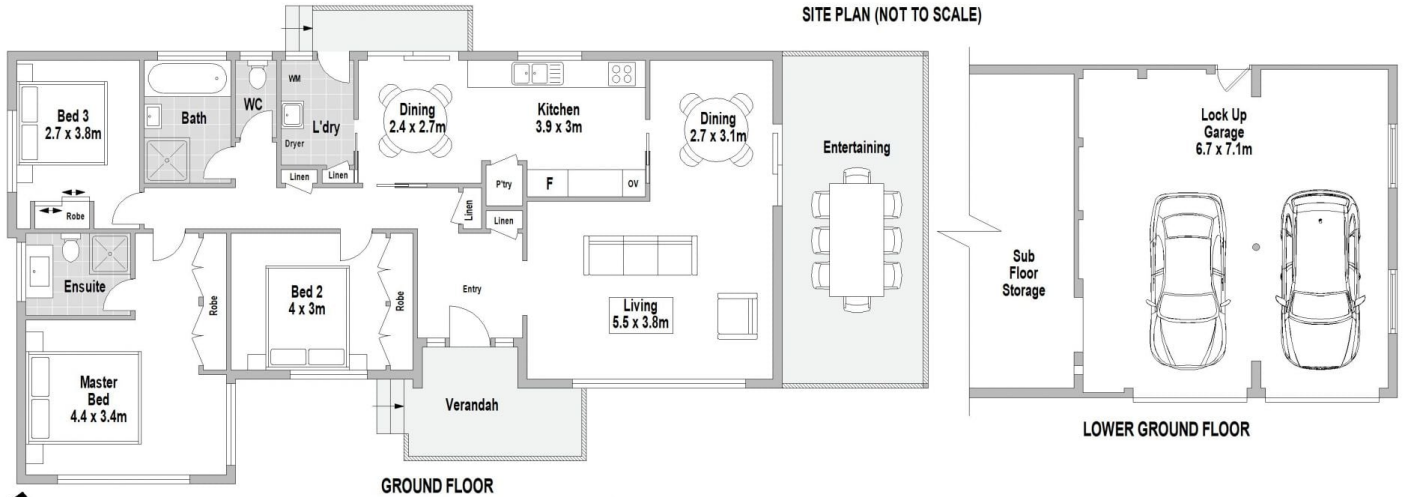
Luke Jeffree
02 9540 2222



Belinda Sanders
02 9540 2222



SITE PLAN (NOT TO SCALE)



2C Marina Crescent, Gymea Bay



Scale in metres. Indicative only. Dimensions are approximate. All information contained herein is gathered from sources we believe to be reliable. However we cannot guarantee its accuracy and interested persons should rely on their own enquiries.