

408/1 Pinnacle Street Miranda NSW

2 2 1

Positioned perfectly in the heart of Miranda, this stylish apartment offers exceptional convenience with a level walk to Miranda train station and Westfield shopping centre.

Positioned on the fourth floor of a secure complex, this modern apartment epitomises effortless contemporary living with its sophisticated blend of style, space, and functionality.

- ? Expansive open plan living and dining area with timber flooring
- ? Great indoor/outdoor connection with a large north facing balcony
- ? Two generously sized bedrooms both with built in

[For full version visit the website](https://www.jreproperty.com.au)

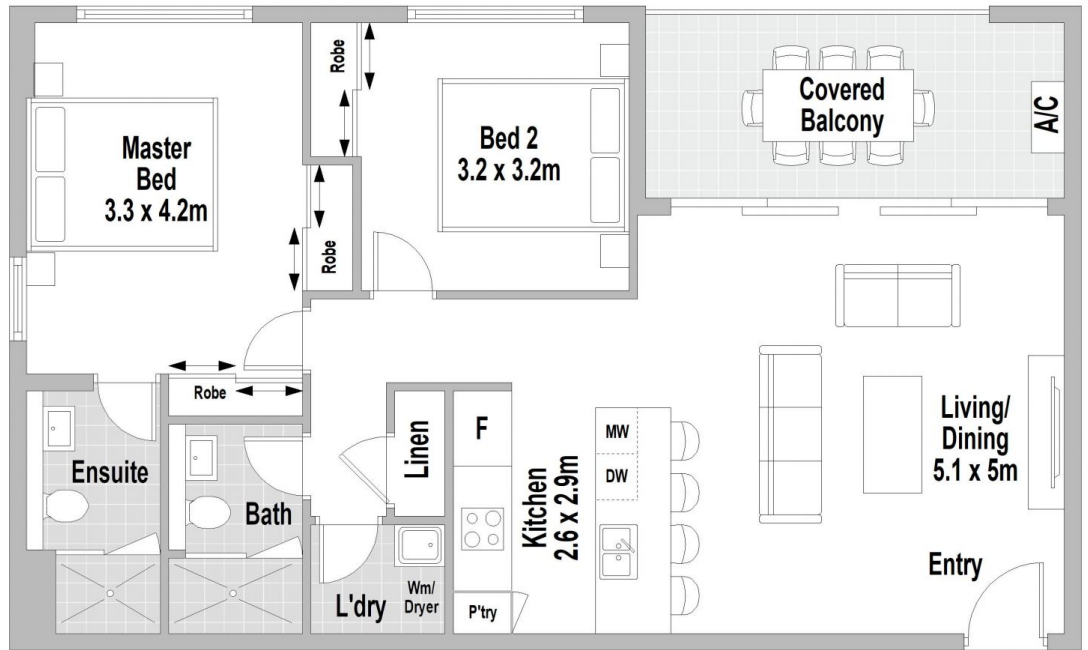
Type : Apartment
Price : For Sale \$850,000 - \$935,000
Building Size : 108 sqm
View : <https://www.jreproperty.com.au/sale/nsw/sutherland/miranda/residential/apartment/8686165>



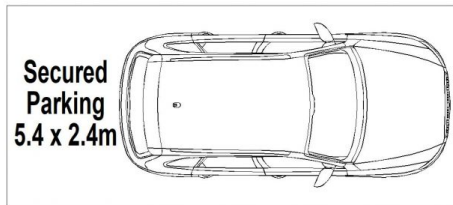
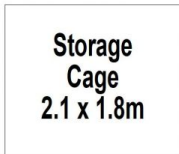
Luke Jeffree
02 9540 2222



Belinda Sanders
02 9540 2222



LEVEL 4



BASEMENT

408/1 Pinnacle Street, Miranda



Scale in metres. Indicative only. Dimensions are approximate. All information contained herein is gathered from sources we believe to be reliable. However we cannot guarantee its accuracy and interested persons should rely on their own enquiries.