



**66a Premier Street Gymea NSW**

4 3 1

Step into effortless contemporary living with this brand-new four-bedroom duplex, where refined design meets understated elegance. A calming neutral palette enhances a highly functional floorplan, seamlessly blending quality craftsmanship with sophisticated, high-end finishes. Framed by lush, tropical landscaping, the home makes an immediate impression with its striking façade and warm, inviting presence. This exceptional duplex offers a lifestyle defined by comfort, style, and effortless entertaining.

? Light and bright open-plan living & dining areas with high ceilings and Velux skylights, seamlessly connect to outdoor spaces  
 ? Ultra modern kitchen with stone island bench, butler's pantry, gas cooktop, integrated fridge and freezer.

[For full version visit the website](https://www.jreproperty.com.au)

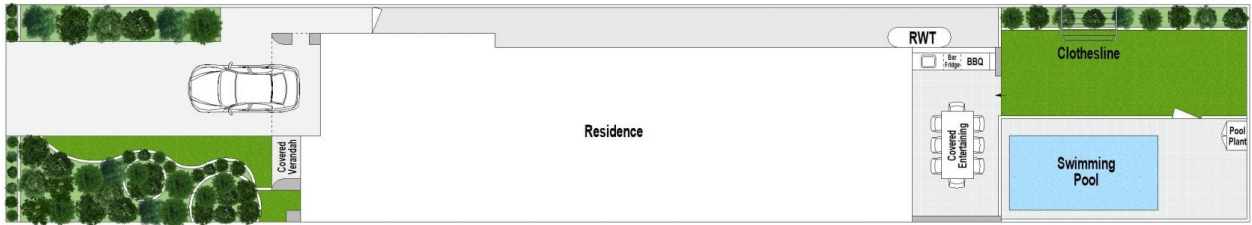
**Type** : Semi Detached  
**Land Size** : 332.15 sqm  
**View** : <https://www.jreproperty.com.au/sale/nsw/sutherland/gymea/residential/semi-detached/8668805>



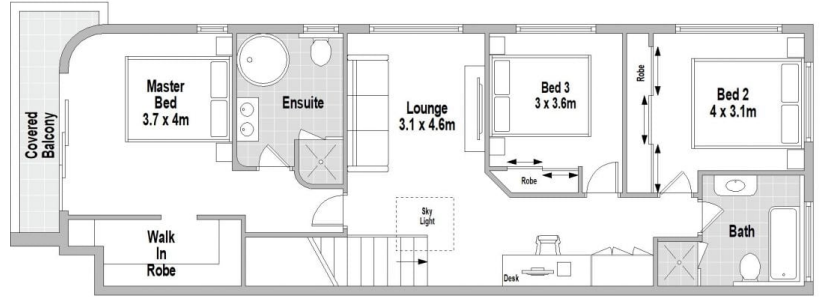
**Luke Jeffree**  
02 9540 2222



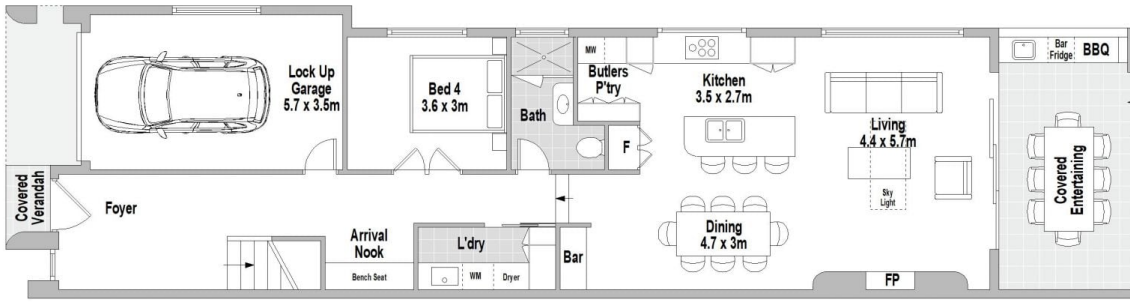
**Belinda Sanders**  
02 9540 2222



SITE PLAN (NOT TO SCALE)



FIRST FLOOR



GROUND FLOOR

66A Premier Street, Gymea



Scale in metres. Indicative only. Dimensions are approximate. All information contained herein is gathered from sources we believe to be reliable. However we cannot guarantee its accuracy and interested persons should rely on their own enquiries.