



**8-10 Bonnie View Street Gymea NSW**

3 3 2

Designed for effortless modern living, these brand new townhouses in Gymea offers a perfect blend of style, space and natural light in a highly convenient setting.

Positioned with easy street access, the townhouses welcomes you with a sunlit, spacious layout and a private north-facing courtyards.

A superb opportunity to secure a fresh contemporary design with a soft neutral palette residence in a sought-after location, just moments from Gymea's vibrant shops, cafés, schools and transport.

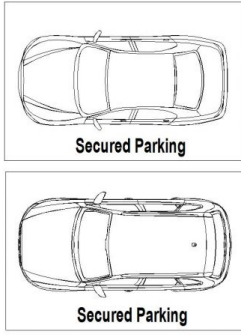
? Brand new townhouses with modern finishes throughout  
? Light-filled, spacious interiors with tiled downstairs living

**Type** : Townhouse  
**Price** : For Sale - \$1,595,000  
**View** : <https://www.jreproperty.com.au/sale/nsw/sutherland/gymea/residential/townhouse/8661041>

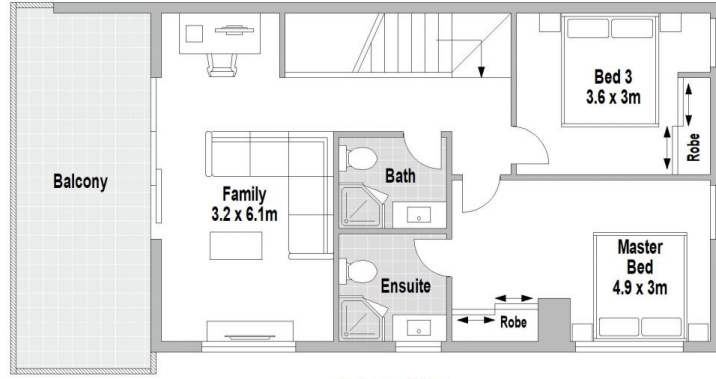
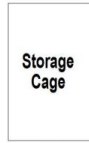


**Trent Jeffree**  
**02 9540 2222**

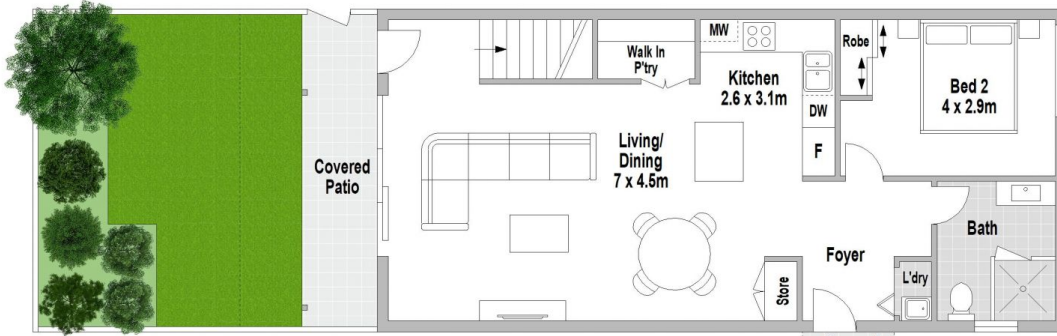
[For full version visit the website](https://www.jreproperty.com.au)



BASEMENT



FIRST FLOOR



GROUND FLOOR

2/10 Bonnie View Street, Gymea



Scale in metres. Indicative only. Dimensions are approximate. All information contained herein is gathered from sources we believe to be reliable. However we cannot guarantee its accuracy and interested persons should rely on their own enquiries.