



112B Manchester Road Gymea NSW

5 3 1

This impeccable, brand-new residence has been thoughtfully designed to showcase open-plan living, with sun-lit, inviting interiors that offer genuine comfort and style.

Entertaining is effortless, featuring a spacious alfresco dining area with a built-in BBQ, complemented by a sun-soaked lawn, in-ground pool and striking water feature.

- ? Light and bright open-plan living and dining zones seamlessly connect to outdoor spaces
- ? State-of-the-art kitchen with stone island bench, butler's pantry, gas cooktop
- ? Private backyard oasis featuring pool, covered alfresco

Type : Semi Detached
View : <https://www.jreproperty.com.au/sale/nsw/sutherland/gymea/residential/semi-detached/8589988>

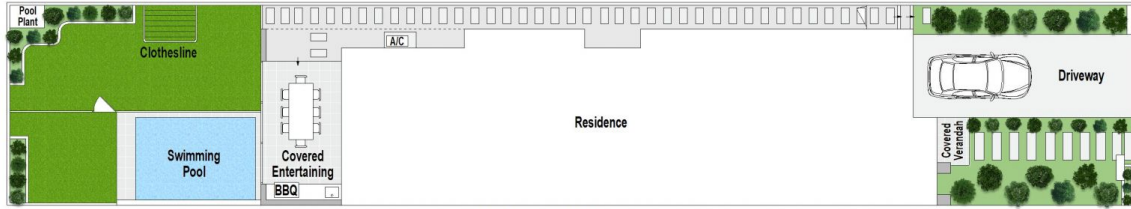


Trent Jeffree
02 9540 2222

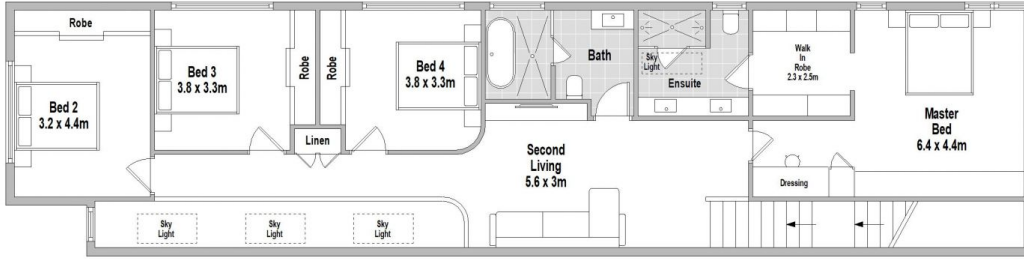


Luke Jeffree
02 9540 2222

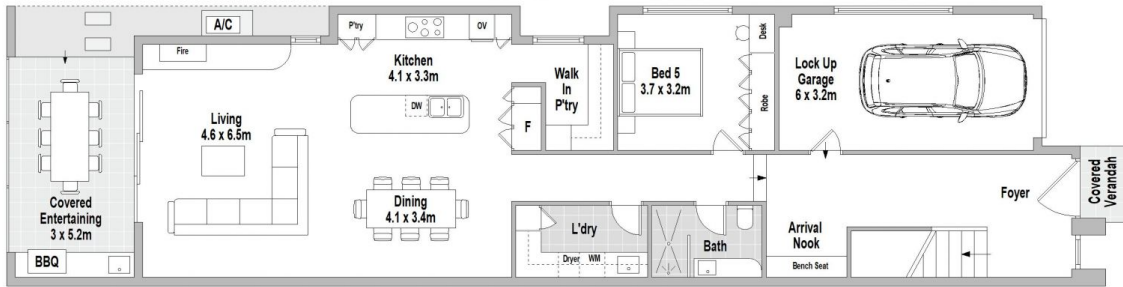
[For full version visit the website](https://www.jreproperty.com.au)



SITE PLAN (NOT TO SCALE)



FIRST FLOOR



GROUND FLOOR

112b Manchester Road, Gymea



Scale in metres. Indicative only. Dimensions are approximate. All information contained herein is gathered from sources we believe to be reliable. However we cannot guarantee its accuracy and interested persons should rely on their own enquiries.