

**1/271-273 Gymea Bay Road Gymea Bay NSW**

**3** **2** **2**

A brand new, elegantly appointed townhouse positioned at the front of an exclusive boutique development in a popular part of Gymea Bay. Meticulously designed and finished to the highest standard, this home features state-of-the-art, ultra-modern interiors and is bathed in abundant natural light. Offering a rare blend of tranquillity and convenience, it presents an exceptional lifestyle opportunity, with vibrant cafés, dining options, and public transport just moments away.

- ? Open plan layout with inclusive living zones and ducted air throughout
- ? Chef-grade kitchen with stone benches, integrated dishwasher and Bosch oven.
- ? Three generously sized bedrooms, all with built-in

[For full version visit the website](https://www.jreproperty.com.au)

**Type** : Townhouse  
**Price** : Auction  
**Building Size** : 227 sqm  
**View** : <https://www.jreproperty.com.au/sale/nsw/sutherland/gymea-bay/residential/townhouse/8322776>



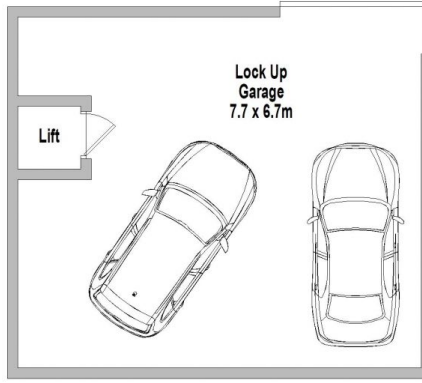
**Luke Jeffree**  
02 9540 2222



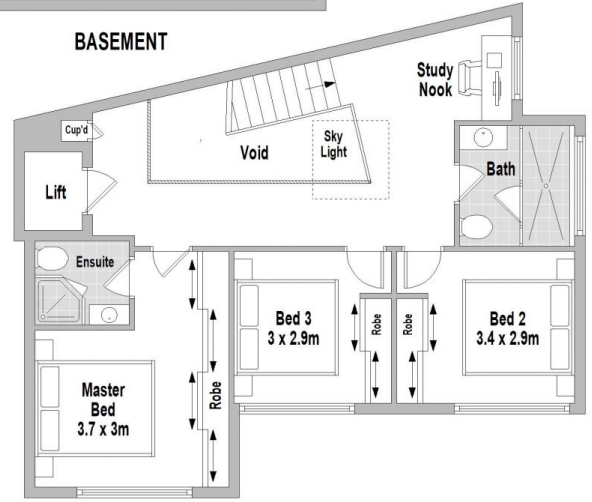
**Belinda Sanders**  
02 9540 2222



GROUND FLOOR



BASEMENT



FIRST FLOOR



1/271-273 Gymea Bay Road, Gymea Bay

Scale in metres. Indicative only. Dimensions are approximate. All information contained herein is gathered from sources we believe to be reliable. However we cannot guarantee its accuracy and interested persons should rely on their own enquiries.