



**13 Greygum Place Gymea Bay NSW**

5 🛏 2 🚿 1 🚗

Tucked away within one of Gymea Bay's premier settings, this spacious dual-level residence delivers the perfect package for those looking for space and room for the kids to grow and play. Offered for the first time since built in the early 90's, its timeless layout provides immediate comfort whilst you plan renovations to match your own style.

**Type** : House  
**Price** : \$ 1,720,000  
**Land Size** : 330.1 sqm  
**View** : <https://www.jreproperty.com.au/sale/nsw/sutherland/gymea-bay/residential/house/8266991>

- ? Substantial floorplan, with a downstairs bedroom
- ? Expansive and multiple open-plan living and dining
- ? Four generous bedrooms upstairs, each with split system AC
- ? Master bedroom with ensuite and large built-in wardrobes
- ? Large kitchen with dishwasher and breakfast bar
- ? Level and sun-drenched fenced yard, single garage with internal access

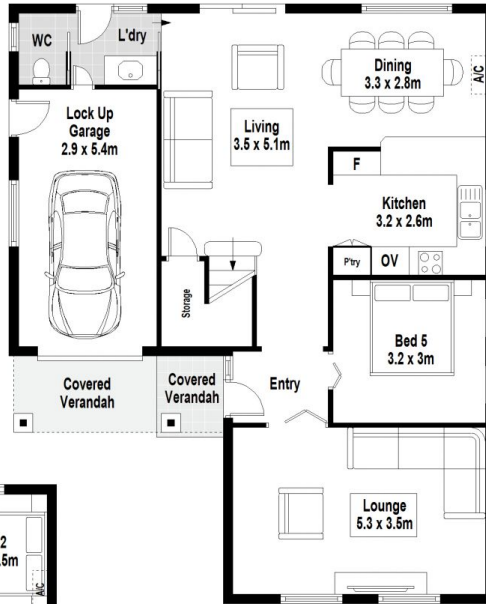
[For full version visit the website](#)



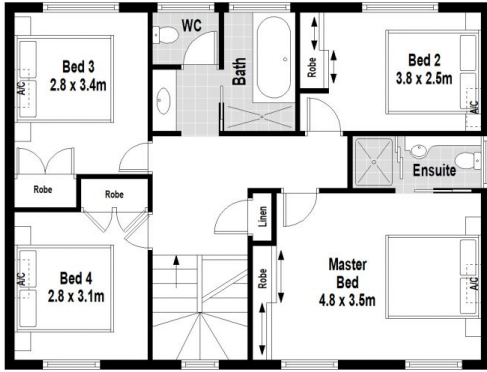
**Luke Jeffree**  
02 9540 2222



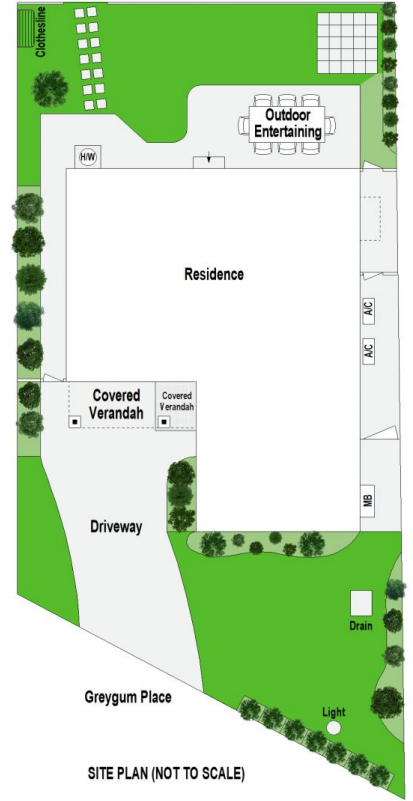
**Belinda Sanders**  
02 9540 2222



GROUND FLOOR



FIRST FLOOR



SITE PLAN (NOT TO SCALE)

13 Greymum Place, Gympie Bay



Scale in metres. Indicative only. Dimensions are approximate. All information contained herein is gathered from sources we believe to be reliable. However we cannot guarantee its accuracy and interested persons should rely on their own enquiries.