



**102 Forest Road Miranda NSW**

5 🛏 3 🚿 1 🚗

Positioned for the ultimate in-family convenience, this cherished family home provides a superb buying opportunity in a well-presented locale.

Resting on a generous 1,296 sqm block of land with a 14.935m frontage this home presents a wealth of opportunity whilst also being placed close to all desired amenities.

Displayed in a well-maintained condition and benefiting from an ideal sunny West facing aspect, this home provides a perfect canvas, comfortable to enjoy as is, whilst you plan minor upgrades in the future, or an excellent opportunity to capitalise on exciting development opportunities (STCA) .

**Type** : House  
**Price** : \$ 1,800,000  
**Land Size** : 1296 sqm  
**View** : <https://www.jreproperty.com.au/sale/nsw/sutherlandland/miranda/residential/house/8030026>

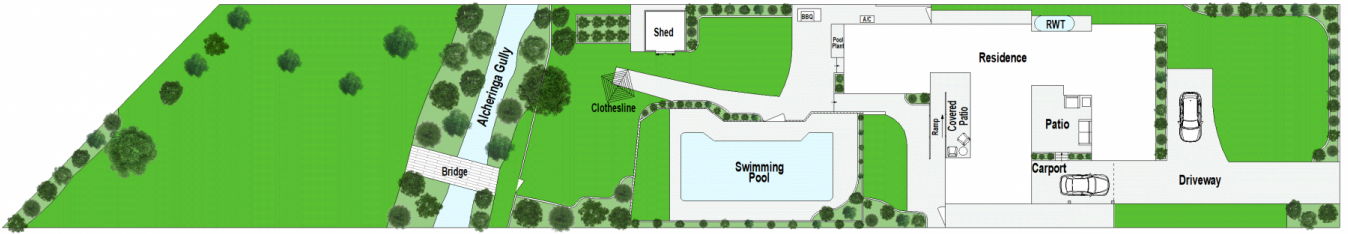


**Luke Jeffree**  
02 9540 2222

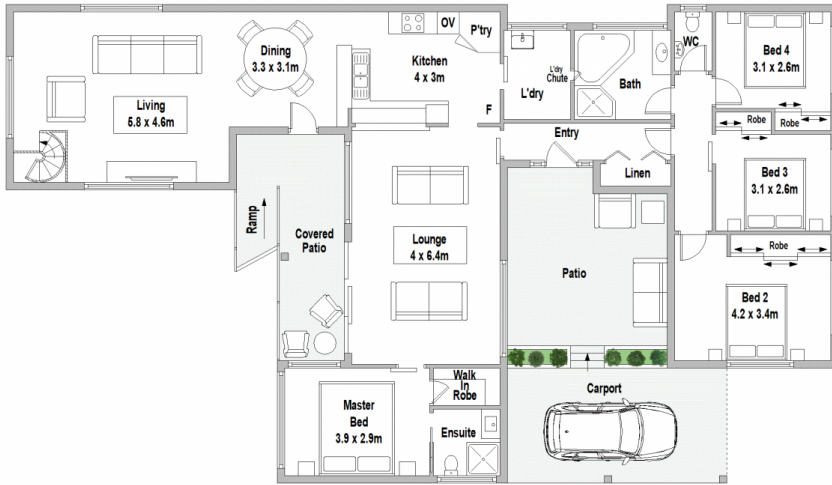


**Dion Moon**  
02 9540 2222

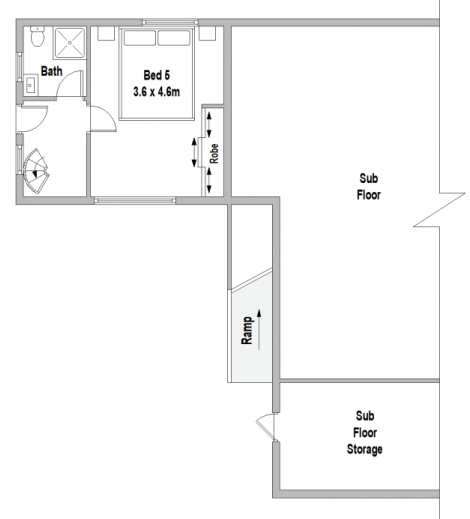
[For full version visit the website](https://www.jreproperty.com.au)



SITE PLAN (NOT TO SCALE)



GROUND FLOOR



LOWER GROUND FLOOR



102 Forest Road, Miranda

Scale in metres. Indicative only. Dimensions are approximate. All information contained herein is gathered from sources we believe to be reliable. However we cannot guarantee its accuracy and interested persons should rely on their own enquiries.