

**10/52-56 Manchester Road Gymea NSW**

3 1 1

This impeccably presented three-bedroom townhouse offers a lifestyle of immense comfort and convenience located in the very heart of Gymea.

Renovated to perfection with modern timeless upgrades, this property is ready for you to move in and enjoy.

**Featuring:**

- Open living and dining area with timber flooring and ducted air conditioning
- Renovated kitchen with gas cooking, quality appliances and plenty of cupboard space
- Generously proportioned upstairs bedrooms both with built-in robes, master with its own private balcony.
- Convenience of one bedroom downstairs with wall storage cabinetry or option as home office space.
- Modern renovated bathroom with separate bath and shower

**Price** : \$950 Per Week

**View** : <https://www.jreproperty.com.au/lease/nsw/sutherland/gymea/residential/townhouse/7989955>



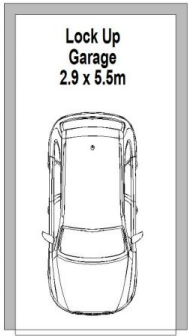
**Natalie McHugh**  
02 9540 2222



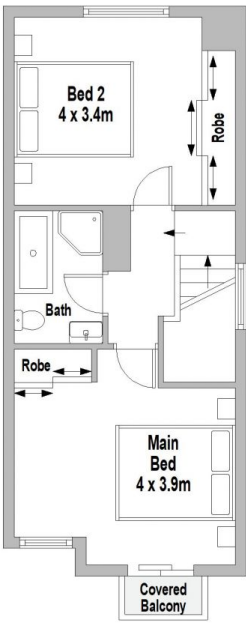
**Kimberly Williams**  
02 9540 2222



GROUND FLOOR



LEVEL B1



FIRST FLOOR



10/52 Manchester Road, Gympie

Scale in metres. Indicative only. Dimensions are approximate. All information contained herein is gathered from sources we believe to be reliable. However we cannot guarantee its accuracy and interested persons should rely on their own enquiries.