

**11/43 Talara Road Gymea NSW**

2 1 1

Wonderfully central, convenient and generously proportioned apartment presents a perfect address on the top floor for the first home buyer, young executive or investor. A contemporary renovated design with a neutral colour palette that will always maintain a stylish appearance. With just steps to the vibrant heart of Gymea village, bus and rail.

**Price** : UNDER CONTRACT

**View** : <https://www.jreproperty.com.au/sale/nsw/sutherland/gymea/residential/unit/7984543>

- ? Spacious living & dining, floating flooring, A/C
- ? Kitchen with plenty of cupboards & dishwasher
- ? Generous bedrooms both with built-in wardrobes
- ? Renovated bathroom, frameless shower & freestanding bath
- ? Oversized single lock-up garage, security intercom

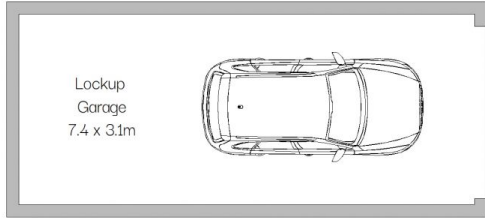


**Luke Jeffree**  
02 9540 2222

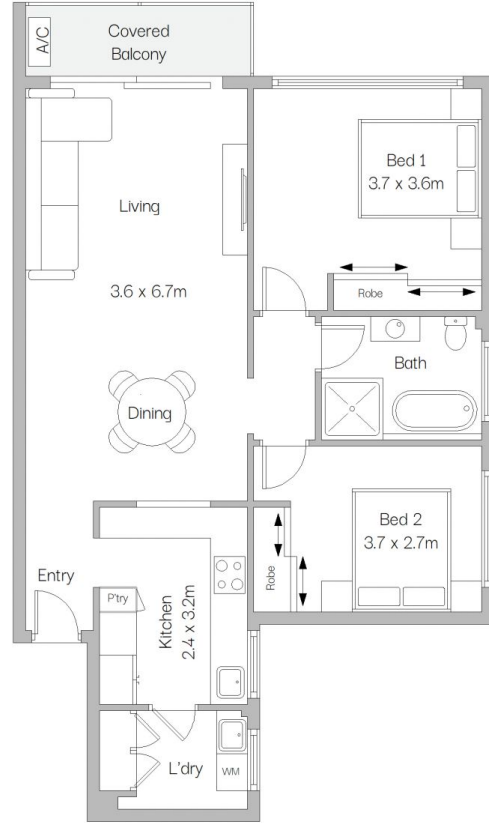


**Belinda Sanders**  
02 9540 2222

Strata: \$994.43 pq | Council: \$366.67 pq | Water \$171.41 pq



GROUND FLOOR



TOP FLOOR



11/43 Talara Road, Gymea

Scale in metres. Indicative only. Dimensions are approximate. All information contained herein is gathered from sources we believe to be reliable. However we cannot guarantee its accuracy and interested persons should rely on their own enquiries.