

35 North West Arm Road Gymea NSW

4 3 2

DEPOSIT RECEIVED, NO FURTHER INSPECTIONS

Beautifully presented with recent updates, this quality family home offers a versatile floorplan with an ideal outdoor deck for the entertainer.

This property has the added benefit of a stand-alone self-contained dwelling with its own separate side access.

Features:

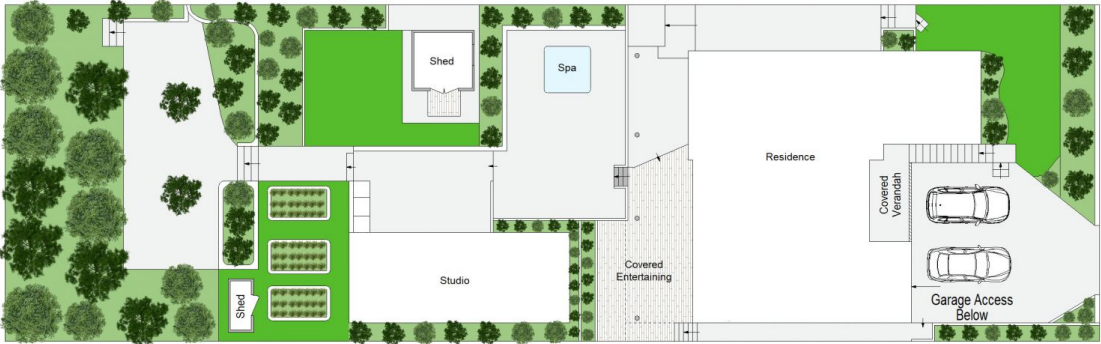
- Updated kitchen, with gas cooking, marble tops, and bi-fold windows
- Large lounge and spacious dining areas with split system A/C
- Expansive rear alfresco deck with 4-seater therapeutic spa
- Four bedrooms, two rooms with built-in wardrobes and fans, one bedroom is a self contained studio at the rear of the property.

Price : \$1100 per week

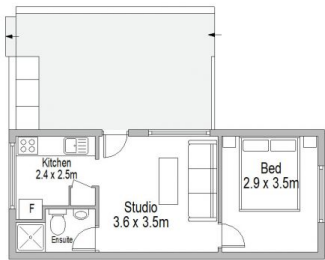
View : <https://www.jreproperty.com.au/lease/nsw/sutherland/gymea/residential/house/7980972>



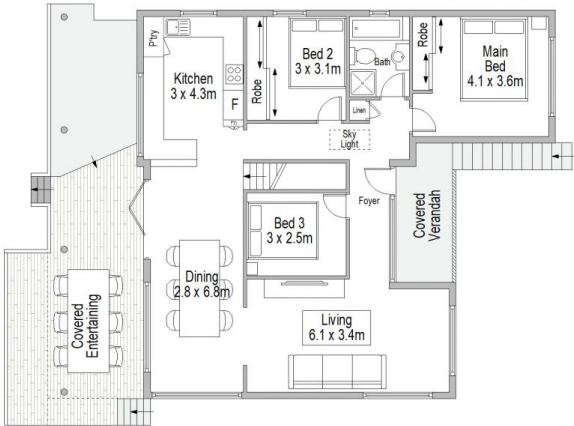
Kimberly Williams
02 9540 2222



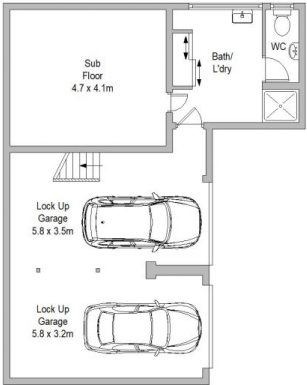
SITE PLAN (NOT TO SCALE)



GROUND FLOOR



GROUND FLOOR



LOWER GROUND FLOOR



35 North West Arm Road, Gymea

Scale in metres. Indicative only. Dimensions are approximate. All information contained herein is gathered from sources we believe to be reliable. However we cannot guarantee its accuracy and interested persons should rely on their own enquiries.