



13 Arcadia Avenue Gymea Bay NSW

4 2 4

Showcasing a captivating design of family living on a grand scale, this contemporary home offers generous proportions along with a versatile floor plan. Taking full advantage of its sun-filled aspect, this stunning haven is flooded with natural light and a seamless indoor/outdoor flow and will guarantee effortless entertaining all year round. Ideally positioned in the sought-after-family-friendly location of Gymea Bay close to great schools, cafes, and local waterways.

- Peaceful family paradise with multiple living areas and elegant design
- Stunning kitchen with stone island bench, gas cooking, and walk-in pantry
- Beautiful and comprehensively appointed bathrooms and laundry facilities
- Lavish master bedroom with walk-in wardrobe and ensuite with double vanity

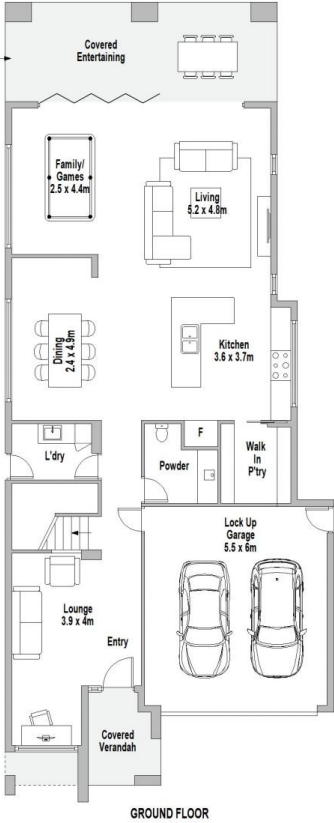
Price : For Sale \$2,700,000
Land Size : 663.9 sqm
View : <https://www.jreproperty.com.au/sale/nsw/sutherland/gymea-bay/residential/house/7980849>



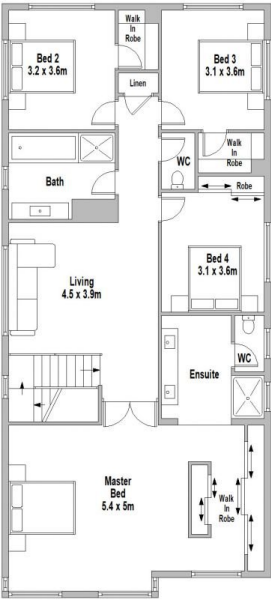
Luke Jeffree
02 9540 2222



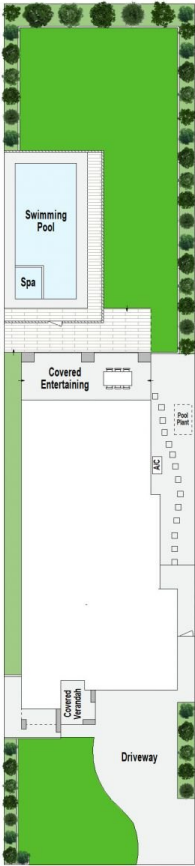
Belinda Sanders
02 9540 2222



GROUND FLOOR



FIRST FLOOR



SITE PLAN (NOT TO SCALE)



13 Arcadia Avenue, Gymea Bay

Scale in metres. Indicative only. Dimensions are approximate. All information contained herein is gathered from sources we believe to be reliable. However we cannot guarantee its accuracy and interested persons should rely on their own enquiries.