



2/6-8 First Avenue Loftus NSW

3 2 2

Quietly positioned and nestled within a well-maintained boutique complex and just a stroll to the vibrant Sutherland shopping district, charming café's, and convenient public transport. This 3 bedroom townhouse provides a low-maintenance lifestyle perfect for those looking to downsize and boasts a spacious floorplan leading out to a private oversized grass & paved courtyard with established gardens that can be enjoyed all year round.

- Open plan living and dining with timber flooring and ceiling fan.
- All bedrooms are equipped with built-in wardrobes
- Master bedroom with walk-in wardrobe and ensuite
- Spacious bathroom with separate bath and shower
- Bi-fold doors open out to the generous paved and grassed courtyard.
- Spacious double lock-up garage with access to backyard

Price : \$ 1,275,000

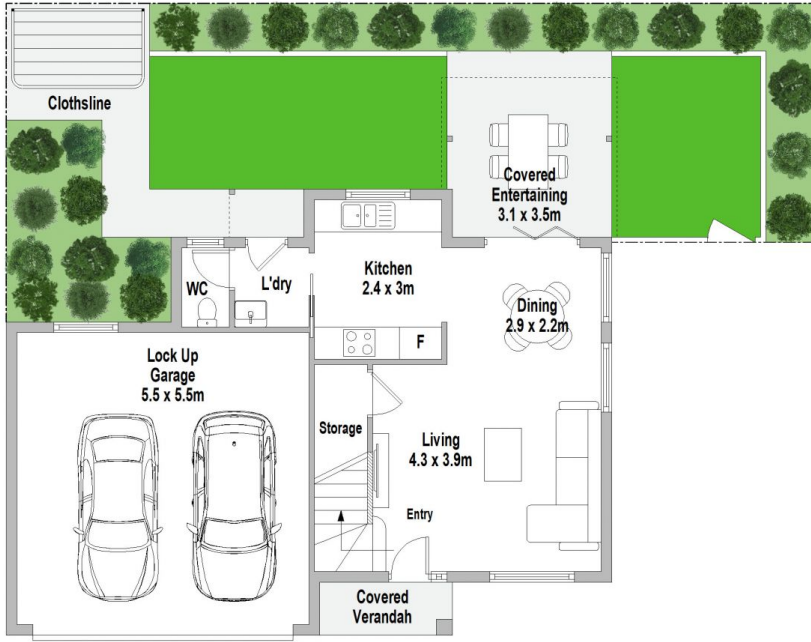
View : <https://www.jreproperty.com.au/sale/nsw/sutherland/loftus/residential/townhouse/7973098>



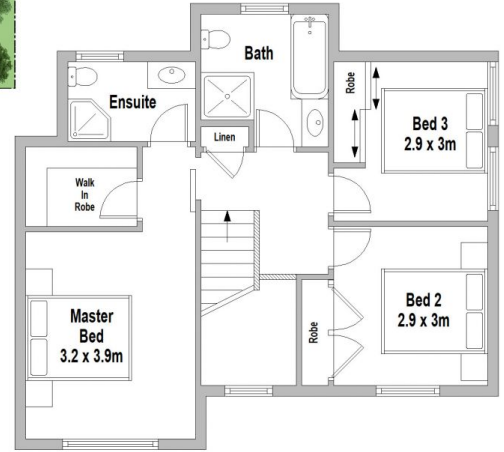
Luke Jeffree
02 9540 2222



Belinda Sanders
02 9540 2222



GROUND FLOOR



FIRST FLOOR



2/6-8 First Avenue, Loftus

Scale in metres. Indicative only. Dimensions are approximate. All information contained herein is gathered from sources we believe to be reliable. However we cannot guarantee its accuracy and interested persons should rely on their own enquiries.