



## 24 Kalkada Avenue Gymea Bay NSW

4 1 2

Ideally situated in a quiet cul-de-sac location, this home is positioned on a flat sunny block in a tightly held street in Gymea Bay across the road from Kalkada Ave Reserve.

This peaceful cottage-style home will suit a growing family and you can live comfortably as is whilst presenting excellent scope to renovate, extend, or rebuild your dream home.

All this is quietly positioned and yet only a short walk from bustling Gymea village, popular schools, and train station.

- ? Original 4-bedroom home
- ? Large, combined lounge and dining area
- ? Neat kitchen with gas cooktop & dishwasher
- ? Large inground pool
- ? Single lock up garage with drive through access to b/yard

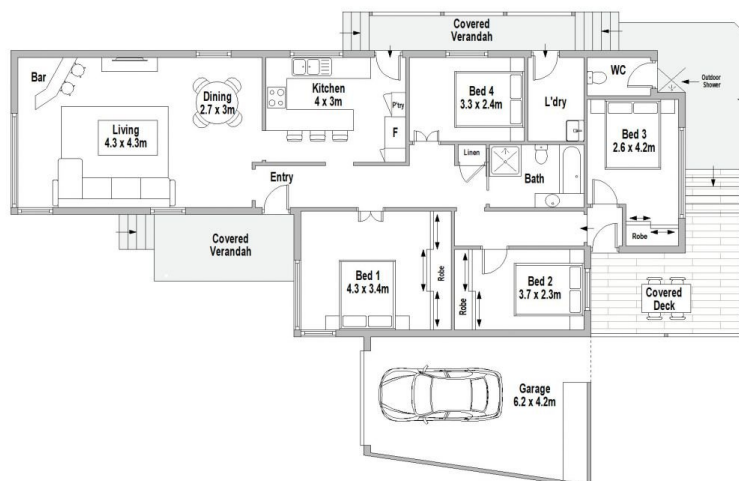
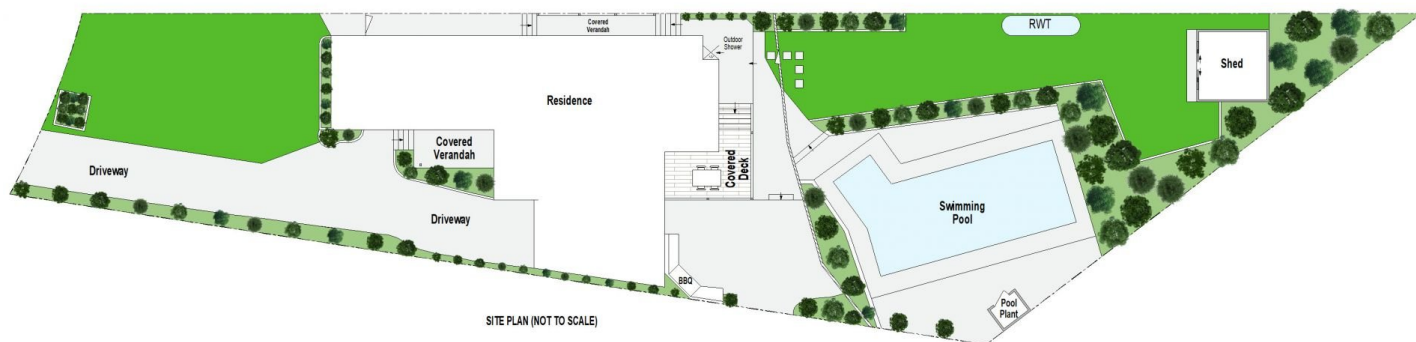
**Price** : For Sale \$1,650,000  
**Land Size** : 733.5 sqm  
**View** : <https://www.jreproperty.com.au/sale/nsw/sutherland/gymea-bay/residential/house/7961641>



**Trent Jeffree**  
02 9540 2222



**Luke Jeffree**  
02 9540 2222



24 Kalkada Avenue, Gymea Bay



Scale in metres. Indicative only. Dimensions are approximate. All information contained herein is gathered from sources we believe to be reliable. However we cannot guarantee its accuracy and interested persons should rely on their own enquiries.