



3/20 Seaforth Avenue Woollooware NSW

1 1

Step into an inviting space with an open plan layout, complete with timber floors and natural light. Located on the ground floor of a small boutique strata complex this one bedroom apartment will appeal to a first home buyer or a savvy investor and presents the perfect opportunity to secure a piece of real estate in a desirable location.

Price : \$ 560,000

View : <https://www.jreproperty.com.au/sale/nsw/sutherland/woollooware/residential/unit/7947953>

- ? Light filled apartment with floorboards throughout
- ? Spacious lounge and dining area
- ? Tidy bathroom off the main bedroom
- ? Small complex of only 8
- ? Great location close to station, schools and shops.



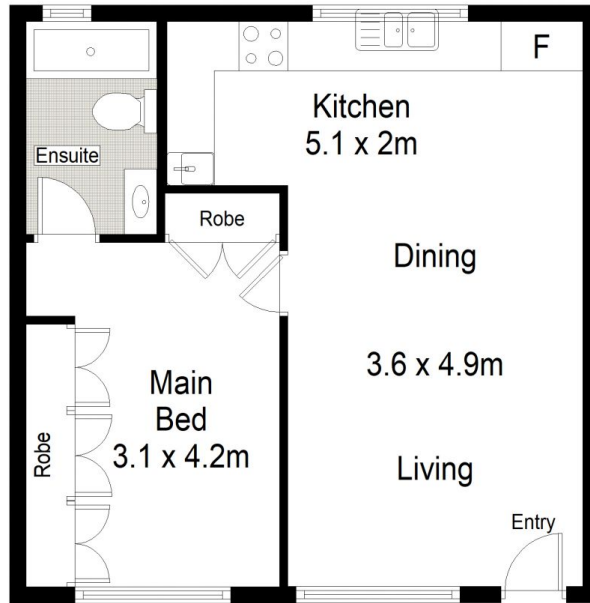
Dion Moon
02 9540 2222



Bayliss Servante
02 9540 2222

Council: \$358.30 pq | Strata: \$667.65 pq | Water: \$171.41

*please note images are digitally styled



RAISED GROUND FLOOR

