



10/52-56 Manchester Road Gymea NSW

3 1 1

An impeccably presented 3-bedroom townhouse offers a lifestyle of immense comfort and convenience located in the very heart of Gymea.

Price : \$ 1,185,000

View : <https://www.jreproperty.com.au/sale/nsw/sutherland/gymea/residential/townhouse/7932199>

Renovated to perfection with modern timeless upgrades, this property is ready for you to move in and enjoy. Ideal for first-home buyers, downsizers with an ideally placed downstairs bedroom and investors alike.



Luke Jeffree
02 9540 2222



Belinda Sanders
02 9540 2222

? Living and dining area flows to the deck and courtyard, master with its own private balcony.

? Renovated kitchen offers gas stove top and quality appliances.

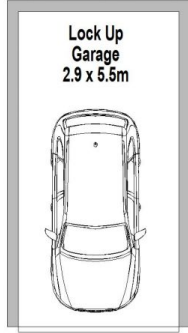
? Generously proportioned upstairs bedrooms both with built-in robes

? An ideal downstairs bedroom with wall storage cabinetry

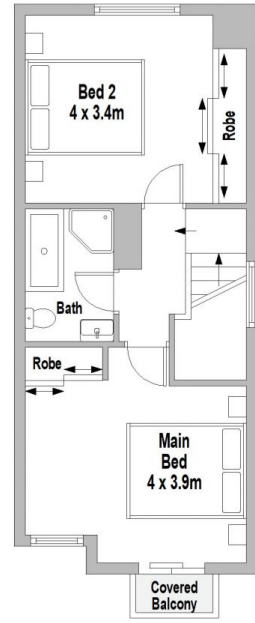
? Single LUG in a security strata complex, large grassed



GROUND FLOOR



LEVEL B1



FIRST FLOOR



10/52 Manchester Road, Gymea

Scale in metres. Indicative only. Dimensions are approximate. All information contained herein is gathered from sources we believe to be reliable. However we cannot guarantee its accuracy and interested persons should rely on their own enquiries.