



2/9-13 Koorabel Avenue Gymea NSW

2 1 2

Providing an oversized ground-floor apartment, this impressive property is peacefully placed at the end of a cul-de-sac street but sits only metres to village shops, cafes and transport.

Price : \$ 900,000

View : <https://www.jreproperty.com.au/sale/nsw/sutherland/gymea/residential/apartment/7920059>

Offering wide appeal with its generous parking and amazing storage areas this apartment is suitable for downsizers, investors first home owners alike.

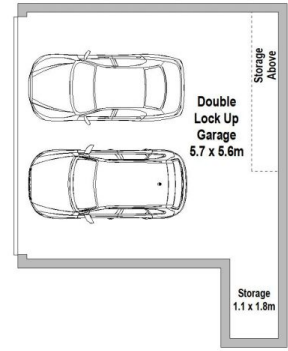
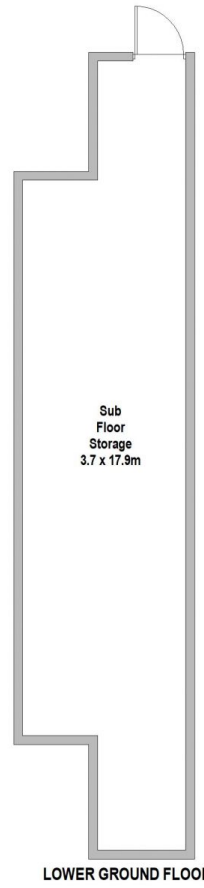
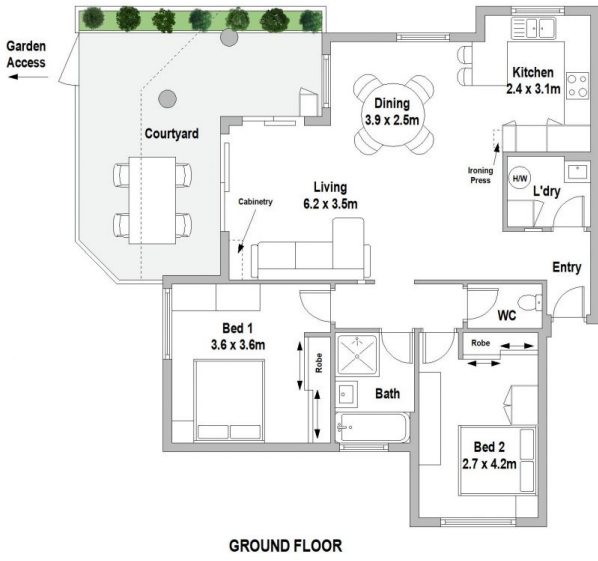


Luke Jeffree
02 9540 2222



Belinda Sanders
02 9540 2222

- ? Ground floor apartment, security complex
- ? Open plan living and dining with split system A/C
- ? Large alfresco courtyard with garden access
- ? Kitchen with dishwasher and breakfast bar
- ? 2 large beds, both with built in wardrobes
- ? Double lock up garage with extra storage space, quality building
- ? Abundance of additional storage space and only one



2/9-13 Koorabel Avenue, Gymea

Scale in metres. Indicative only. Dimensions are approximate. All information contained herein is gathered from sources we believe to be reliable. However we cannot guarantee its accuracy and interested persons should rely on their own enquiries.