



17/507-511 Kingsway MIRANDA NSW

2 1 1

This well presented & generously sized 2 bedroom apartment is located on the elevated ground floor and offers exceptional Miranda buying. Very leasable and liveable in its current condition, it provides an opportunity ideal for first home owners or the perfect investment property. All situated within a stroll to Westfield Miranda, rail, bus and caf?'s.

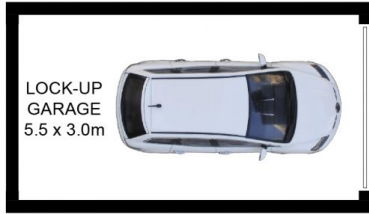
- * Generous bedrooms, master with built in wardrobes
- * Spacious living and separate dining area
- * Kitchen with plenty of cupboard & bench space.
- * Large north facing balcony, security complex
- * Single lock up garage, internal laundry
- * Well maintained strata complex

Strata Levies : \$600 per quarter approx
[For full version visit the website](#)

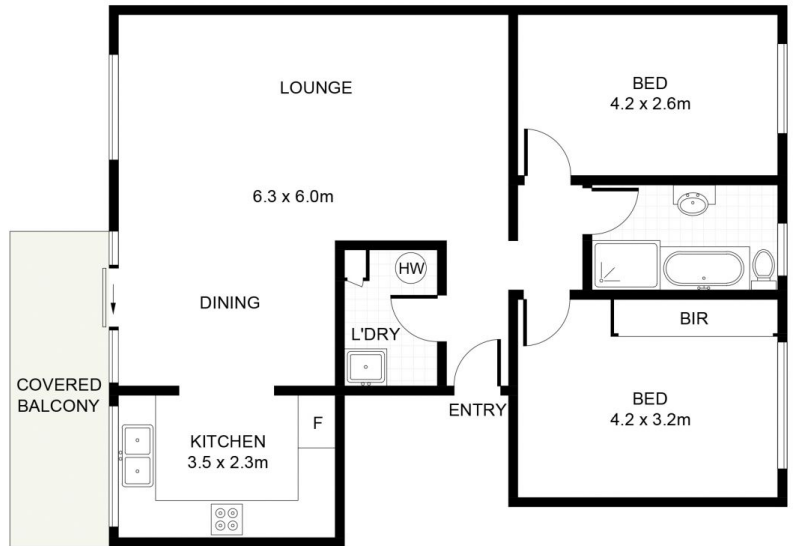
Type : Apartment
Building Size : 12 sqm
View : <https://www.jreproperty.com.au/sale/nsw/sutherland/miranda/residential/apartment/7489081>



Luke Jeffree
02 9540 2222



(NOT SHOWN IN ACTUAL
LOCATION / ORIENTATION)



17/507-511 Kingsway, Miranda

DISCLAIMER: PLANS SHOWN ARE FOR PRESENTATION PURPOSES AND ARE NOT PART OF ANY LEGAL DOCUMENT. ALL MEASUREMENTS AND FIGURES ARE APPROXIMATE.