



**8/20-22 Kiora Road MIRANDA NSW**

2 1 1

Well maintained 2 bedroom 1st floor unit in security building is ideally located only a short stroll to cosmopolitan Miranda and minutes to all transport, cafes and business centre.

**Type** : Apartment

**View** : <https://www.jreproperty.com.au/sale/nsw/sutherland/miranda/residential/apartment/7489036>

Stylish with updated kitchen would suit the first home buyer, investor or downsizer.

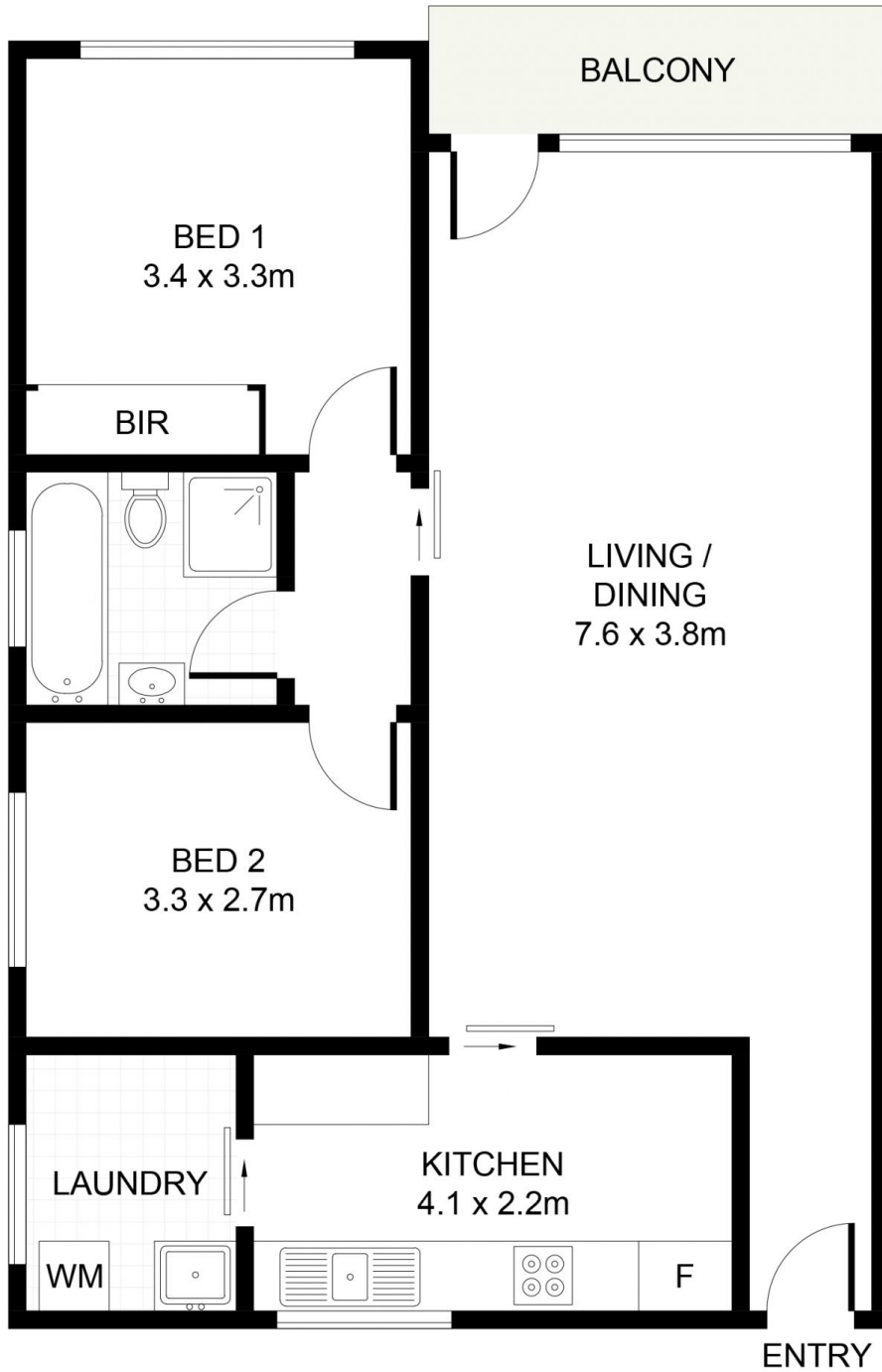
- Spacious open plan living areas flow to private balcony.
- Functional kitchen with ample storage, bench space.
- Double size bedroom, main with built-in robe.
- Oversized lock up garage with internal access.
- Strata \$916.75 Council \$348.10 Water \$180.00

Currently leased to the 26th January 2022 @ \$400 per



**Trent Jeffree**  
**02 9540 2222**

[For full version visit the website](#)



(NOT SHOWN IN ACTUAL LOCATION / ORIENTATION)



8/20-22 Kiora Road, Miranda

DISCLAIMER: PLANS SHOWN ARE FOR PRESENTATION PURPOSES AND ARE NOT PART OF ANY LEGAL DOCUMENT. ALL MEASUREMENTS AND FIGURES ARE APPROXIMATE.