



10/9-15 Mansfield Avenue CARINGBAH NSW

2 1 1

This large ground floor apartment is In the heart of Caringbah with the bonus of being in one of the most popular, quiet and leafy cul de sacs in the area.

A definite stroll to Caringbah shopping, cafes, entertainment and transport makes this truly position perfect. Being the only apartment on this level, in a block of only 3, privacy is assured plus you have the extra advantage of crim safe screen doors & windows throughout. Fabulous open plan living flows out to large Alfresco, north facing area with raised gardens.

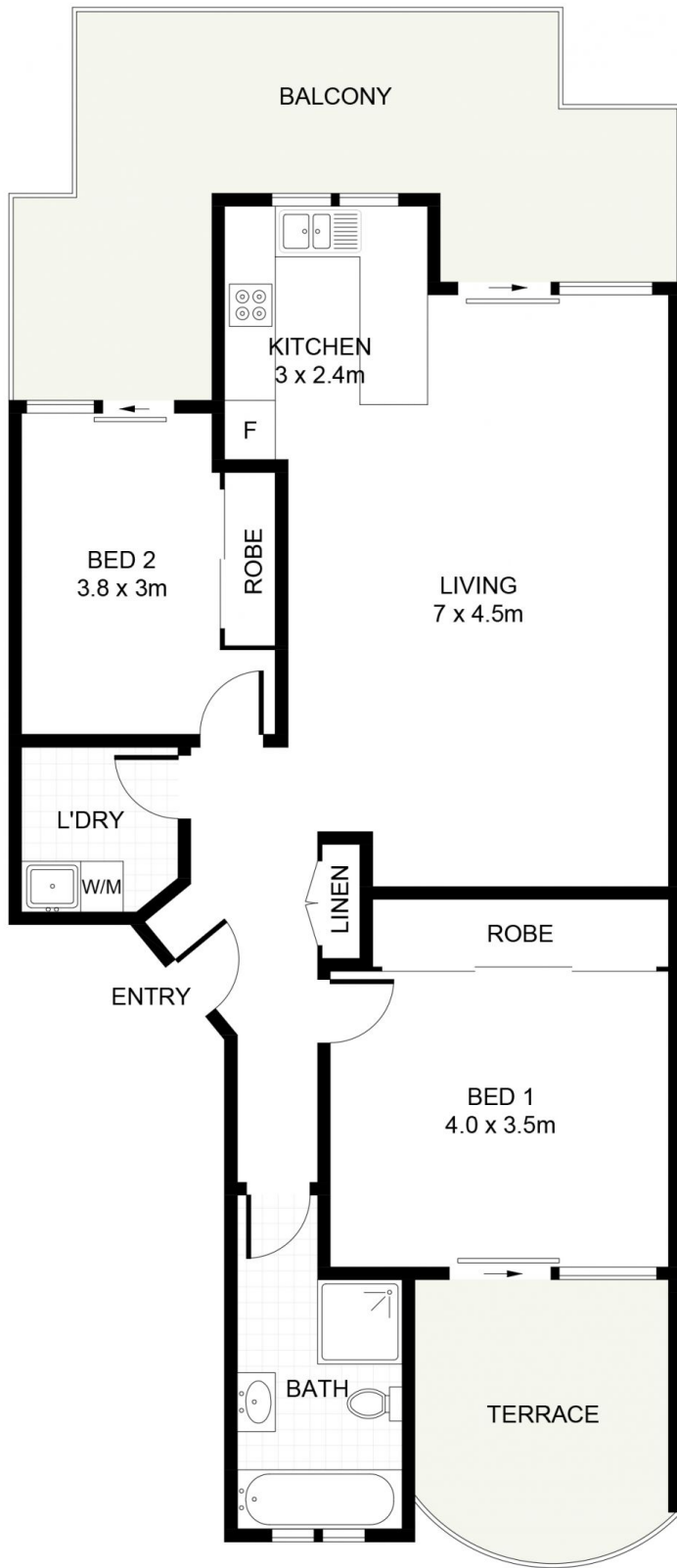
An apartment that is perfect for downsizers, first home buyers or investors. Be sure not to miss your inspection of this one as it won't last long!

[For full version visit the website](https://www.jreproperty.com.au)

Type : Apartment
Land Size : 140 sqm
View : <https://www.jreproperty.com.au/sale/nsw/sutherland/caringbah/residential/apartment/7489020>



Glenda Williams
02 9540 2222



GROUND FLOOR



BASEMENT



10/9-15 Mansfield Avenue, Caringbah

DISCLAIMER: PLANS SHOWN ARE FOR PRESENTATION PURPOSES AND ARE NOT PART OF ANY LEGAL DOCUMENT. ALL MEASUREMENTS AND FIGURES ARE APPROXIMATE.