



**8 Withybrook Place SYLVANIA NSW**

3 1 1

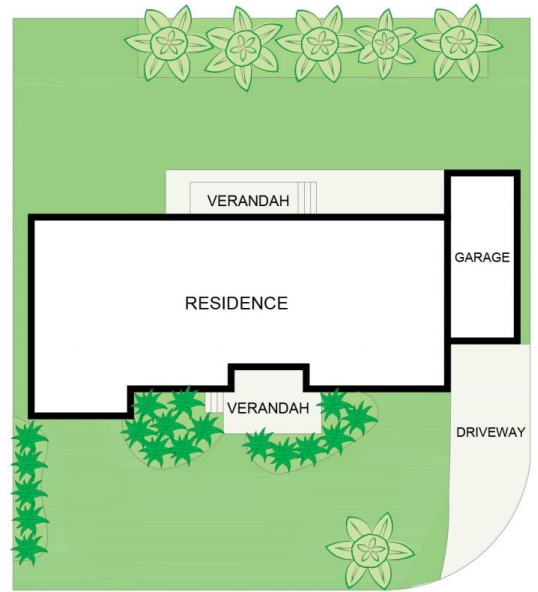
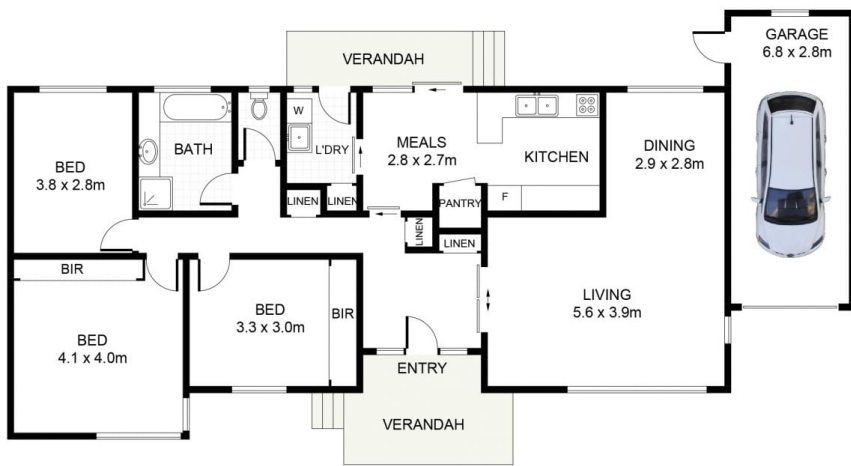
This original three bedroom cottage home is set in a quiet cul-de-sac location in Sylvania. The property promotes an abundance of future potential to the astute renovator or someone who is looking to establish their dream home in a desired real estate locale by starting again.

**Type** : House  
**Land Size** : 556.4 sqm  
**View** : <https://www.jreproperty.com.au/sale/nsw/sutherland/sylvania/residential/house/7488930>

- \* Original condition home, three bedrooms
- \* Sunny 556.4m2 block, corner position
- \* Renovate / Knockdown Rebuild
- \* Position & potential & affordable home
- \* Perfect for first home buyer or investor
- \* 13.379m frontage x 20.06m
- \* Only minutes to the conveniences of shops and facilities



**Luke Jeffree**  
02 9540 2222



SITE PLAN  
(NOT TO SCALE)



## Withybrook Place, Sylvania

DISCLAIMER: PLANS SHOWN ARE FOR PRESENTATION PURPOSES AND ARE NOT PART OF ANY LEGAL DOCUMENT. ALL MEASUREMENTS AND FIGURES ARE APPROXIMATE.