



135 Forest Road GYMEA NSW

4 2 2

Designed for contemporary living this beautiful four-bedroom home showcases quality finishes over a spacious level layout which provides superb seamless indoor/outdoor flow. The focal point of this home is the large kitchen which flows through to the living and dining area which transitions out to a covered alfresco area overlooking the manicured gardens and large outdoor spa which makes entertaining effortless

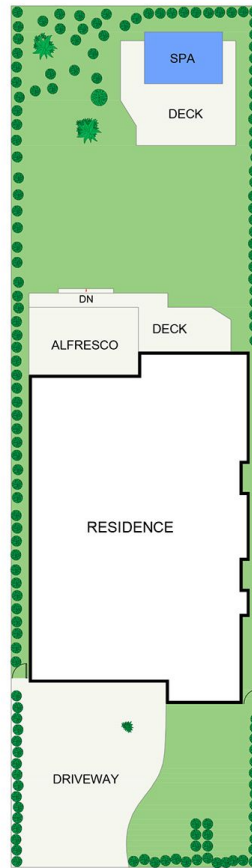
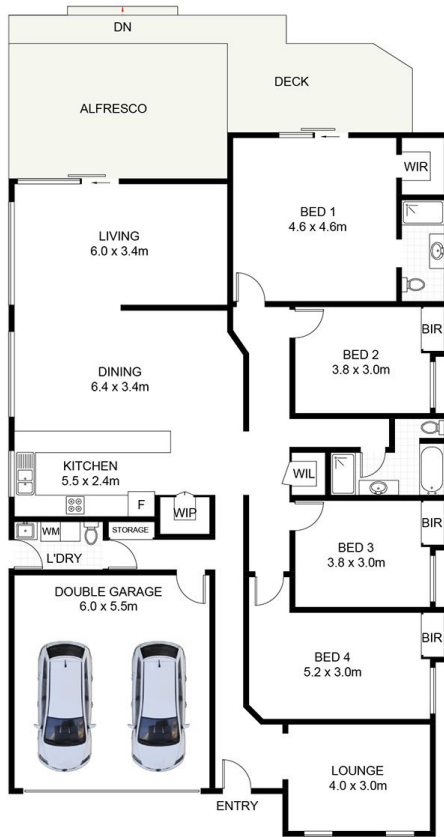
- * Four large bedrooms with BIR's, main ensuite and WIR
- * Gourmet galley style kitchen, huge island bench & gas cooking
- * Modern open plan living areas with tiled flooring plus additional living area
- * North facing yard with plenty of privacy & swim spa with

Type : House
Land Size : 663.9 sqm
View : <https://www.jreproperty.com.au/sale/nsw/sutherlandland/gymea/residential/house/7488928>



Luke Jeffree
02 9540 2222

[For full version visit the website](https://www.jreproperty.com.au)



SITE PLAN
(NOT TO SCALE)



Forest Road, Gymea

DISCLAIMER: PLANS SHOWN ARE FOR PRESENTATION PURPOSES AND ARE NOT PART OF ANY LEGAL DOCUMENT. ALL MEASUREMENTS AND FIGURES ARE APPROXIMATE.