



8 Mypolonga Avenue GYMEA BAY NSW

5 2 1

This home is perfectly positioned in one of Gymea Bay's most tightly held cul-de-sac locations and boasts spacious living with spectacular water views from most rooms of the upper storey.

The versatile floorplan provides multiple living areas and a total of 5 bedrooms over two levels to accommodate a growing family. A fantastic outdoor space provides a covered entertaining area and overlooks the large inground pool with level lawns surrounds.

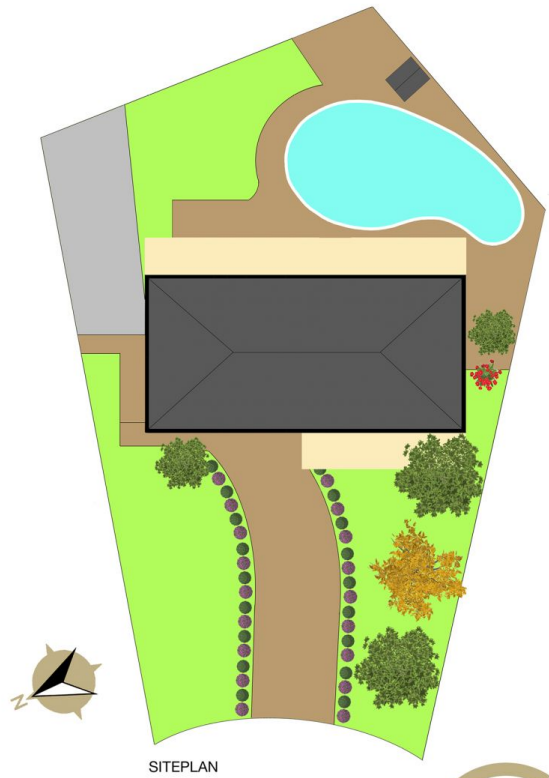
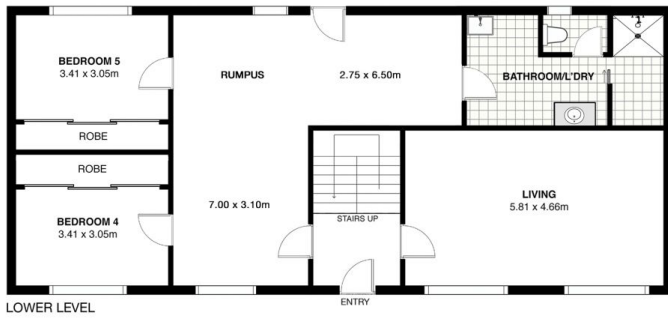
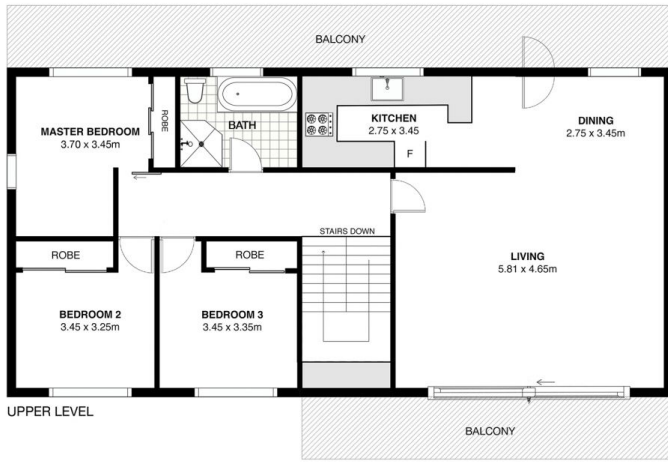
Original condition throughout this family home has been well maintained and provides the perfect opportunity for the buyer looking to renovate and call home.

Type : House
Land Size : 575.4 sqm
View : <https://www.jreproperty.com.au/sale/nsw/sutherlandland/gymea-bay/residential/house/7488879>



Luke Jeffree
02 9540 2222

[For full version visit the website](https://www.jreproperty.com.au)



8 Mypolonga Avenue, Gymea Bay

This is for illustrative purposes only. All dimensions are approximations. These illustrations do not constitute part of any legal documents.

