



282 Gymea Bay Road GYMEA BAY NSW

4 3 4

Offered for the first time in over 30 years this light filled home sits on a huge 948m2 block (approx.) that is zoned R2 Low density residential.

A truly 'feel good' home with endless possibilities, high 9 foot ceilings and an abundance of character. Renovate or rebuild the choice is yours.

A beautiful private grassy rear yard to enjoy or perhaps develop (STCA).

Situated in a wonderful leafy area close proximity to Gymea Baths and Old School Park Reserve, caf?s and transport.

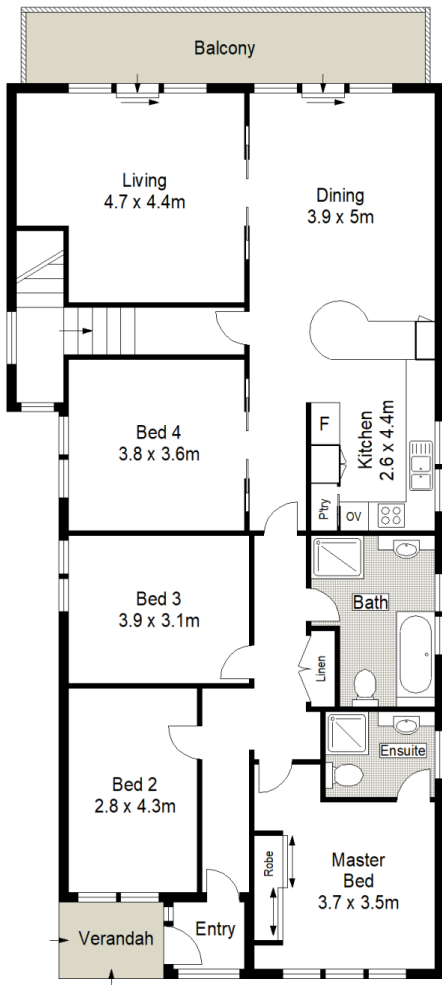
Gymea Bay Primary school and Kirrawee High school

[For full version visit the website](https://www.jreproperty.com.au)

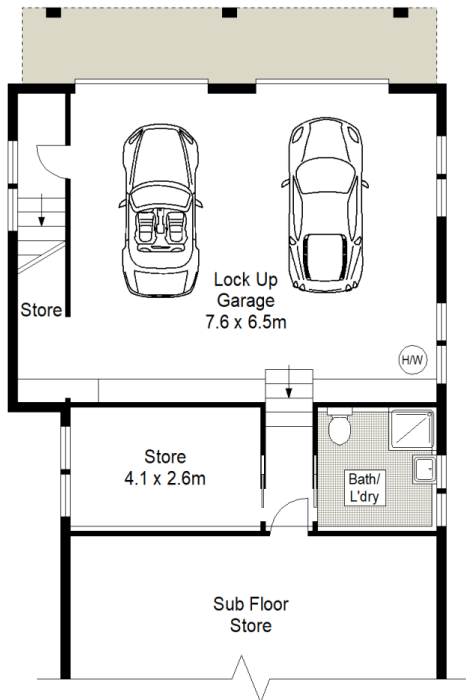
Type : House
Land Size : 948 sqm
View : <https://www.jreproperty.com.au/sale/nsw/sutherland/gymea-bay/residential/house/7488849>



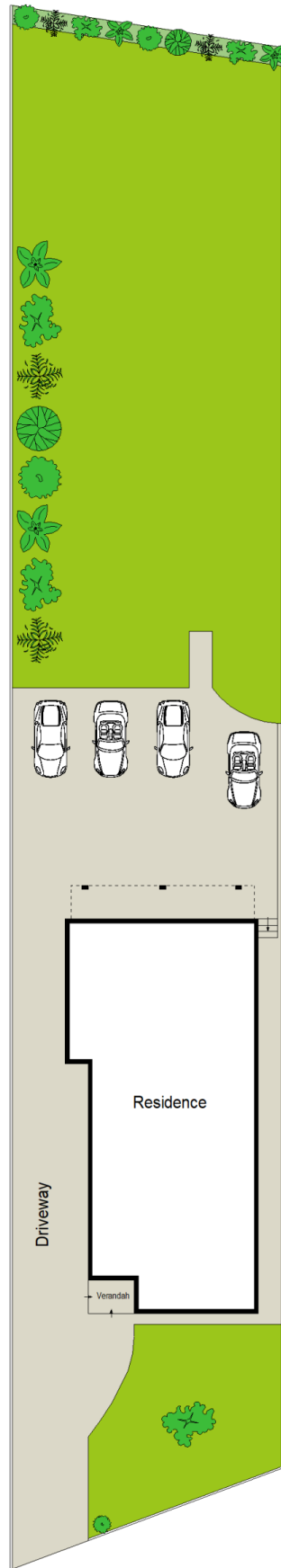
Glenda Williams
02 9540 2222



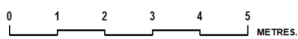
GROUND FLOOR



LOWER GROUND FLOOR



SITE PLAN (NOT TO SCALE)



Scale in metres. Indicative only. Dimensions are approximate. All information contained herein is gathered from sources we believe to be reliable. However we cannot guarantee its accuracy and interested persons should rely on their own enquiries.

