



155 Kangaroo Point Road KANGAROO POINT NSW

3 1 2

FIRST TIME OFFERED IN OVER 60 YEARS and positioned on a generous 923 sqm parcel of land this family home is in original condition throughout and presents the perfect opportunity for the buyer looking to renovate and capitalise in a highly sought-after location.

Providing a spacious floorplan with formal living and dining on entry leading to a large timber kitchen and a casual living area overlooking the rear yard with established trees and gardens.

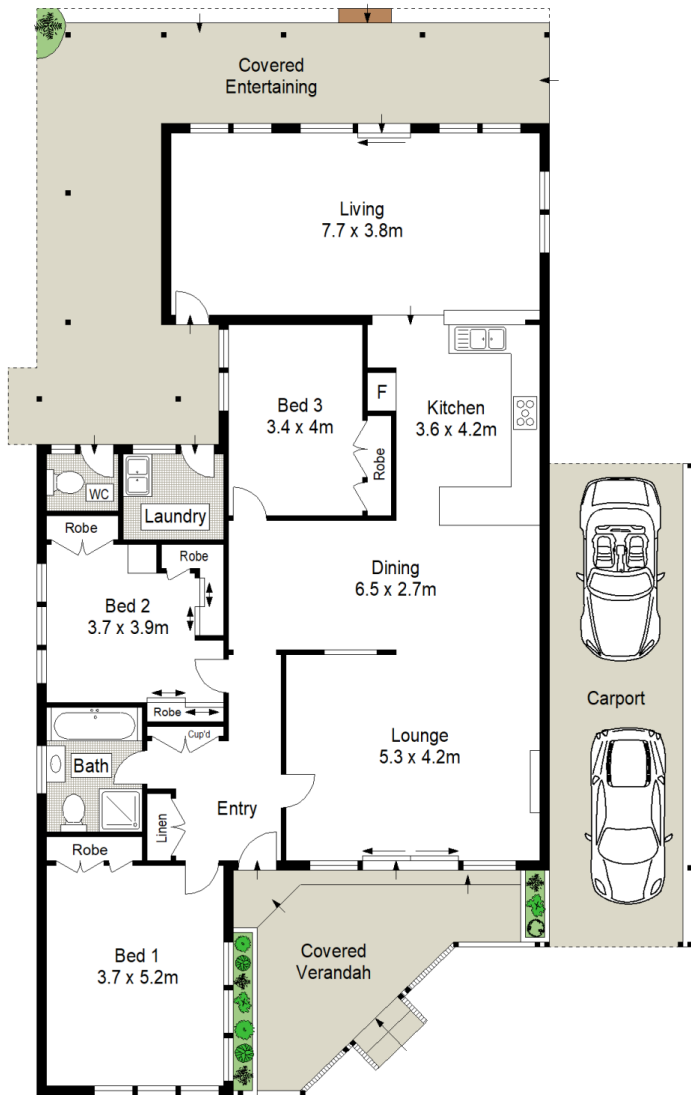
Plenty of scope to improve or possibly extend to enjoy the water views over Georges River and in proximity to Southgate Shopping Centre, Sylvania Heights Public and Sylvania High School.

[For full version visit the website](https://www.jreproperty.com.au)

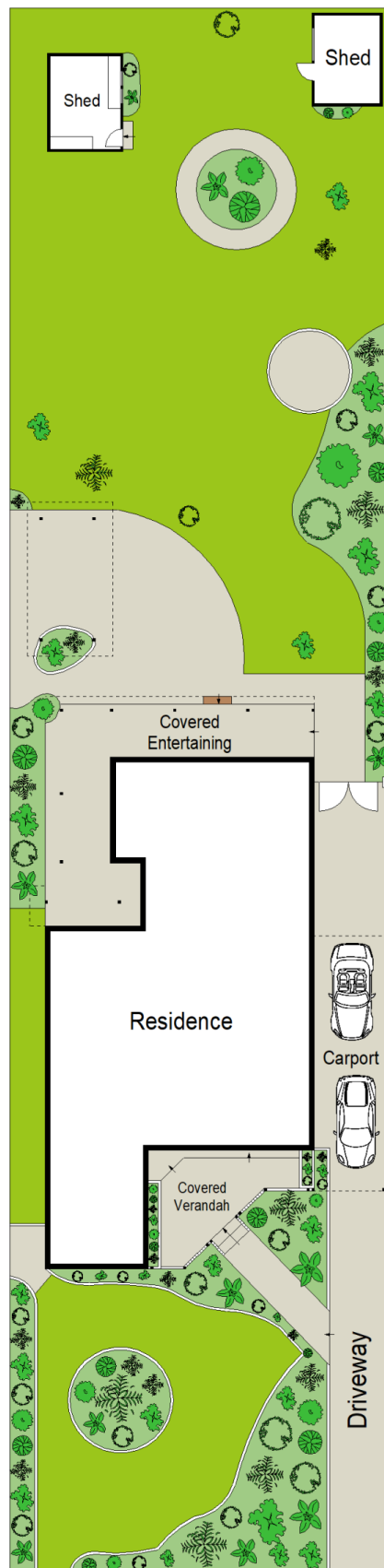
Type : House
Land Size : 923 sqm
View : <https://www.jreproperty.com.au/sale/nsw/sutherlandland/kangaroo-point/residential/house/7488848>



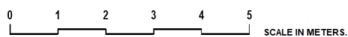
Luke Jeffree
02 9540 2222



GROUND FLOOR



SITE PLAN (NOT TO SCALE)



Scale in metres. Indicative only. Dimensions are approximate. All information contained herein is gathered from sources we believe to be reliable. However we cannot guarantee its accuracy and interested persons should rely on their own enquiries.

155 Kangaroo Point Road, Kangaroo Point

