



10 Marga Road GYMEA BAY NSW

3 2 3

Offering a versatile and spacious floorplan with fresh interiors, this single level home is designed with family in mind with the opportunity to further improve.

Situated in a quiet sought-after location and offering multiple living areas, 3 spacious bedrooms all with built-ins and master with ensuite. Outdoors provides a covered entertaining area overlooking a level grass yard and a lock up garage with an additional secure tandem carport with remote access for further cars.

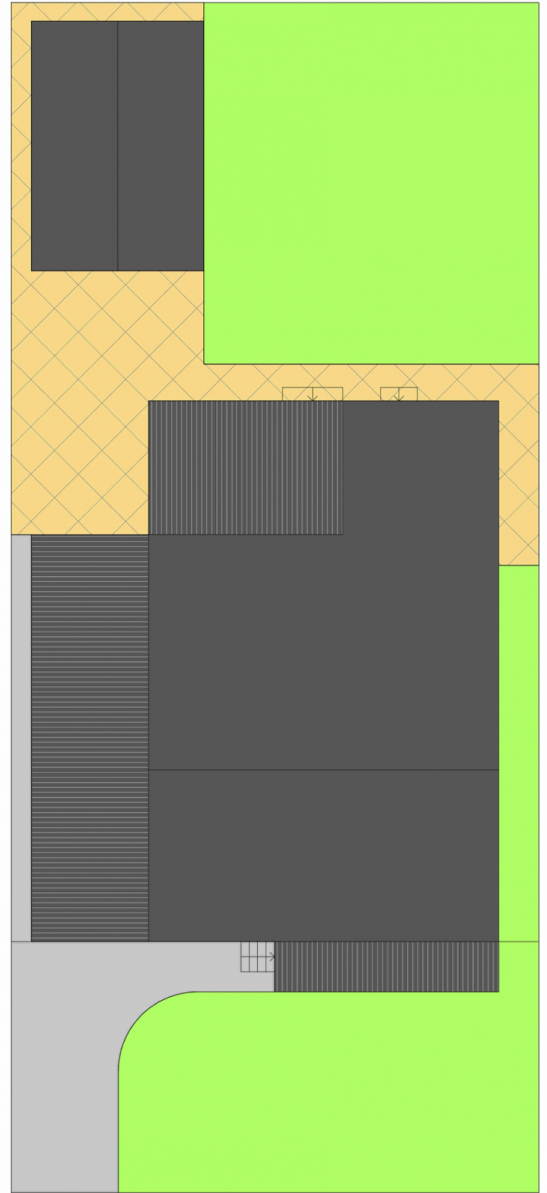
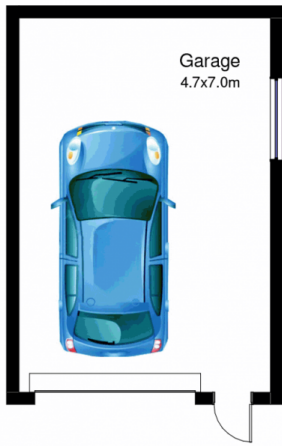
- Open plan kitchen and dining area leading to large family room
- 3 Bedrooms-all with built-ins and master complete with ensuite

[For full version visit the website](https://www.jreproperty.com.au)

Type : House
Land Size : 575.4 sqm
View : <https://www.jreproperty.com.au/sale/nsw/sutherland/gymea-bay/residential/house/7488826>



Luke Jeffree
02 9540 2222



10 Marga Road, Gymea Bay

DISCLAIMER: This is for illustrative purposes only. All dimensions are approximate and it does not constitute part of any legal documents.