

111 Kingswood Road ENGADINE NSW

5 🛏 2 🚿 2 🚗

Perfect for the growing family this stunning refurbished home provides an abundance of light filled interiors over two levels of living and positioned in a family friendly location close to Marton Public School.

The spacious floorplan provides versatility with a large downstairs bedroom complete with ensuite and four terrific sized bedrooms upstairs to accommodate a large family with ease.

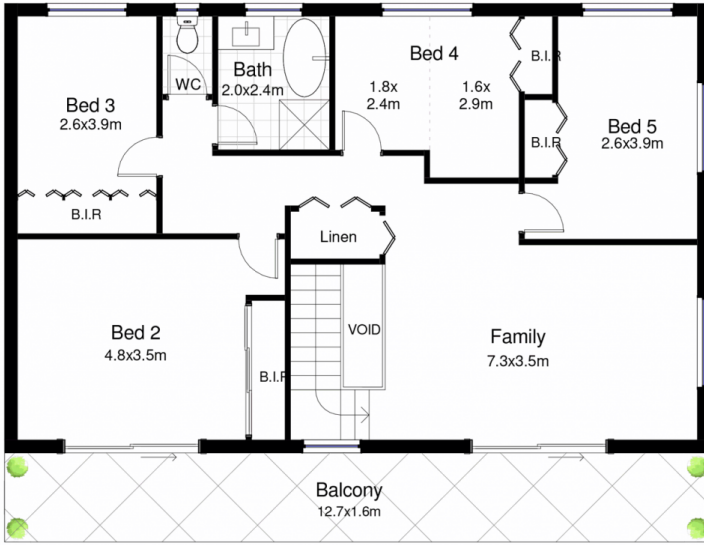
Entertaining will be a pleasure while you watch the children play in the secure private yard with established gardens and level lawn. This appealing quality home with so many features to mention will surely tick the boxes.

Type : House
Land Size : 581 sqm
View : <https://www.jreproperty.com.au/sale/nsw/sutherland/engadine/residential/house/7488801>

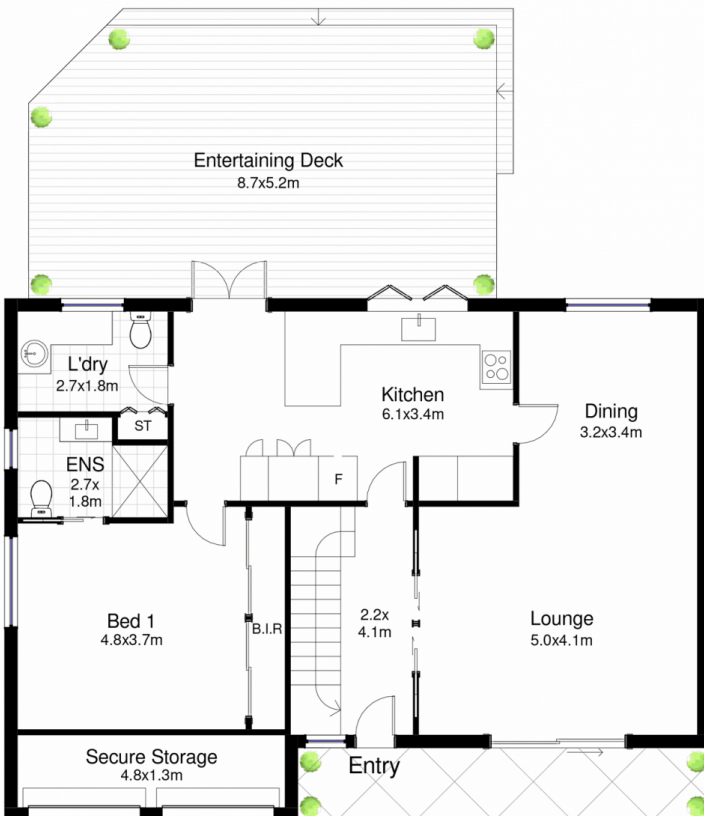
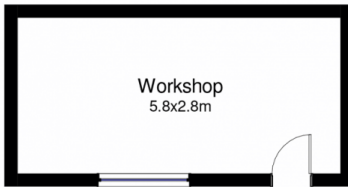


Luke Jeffree
02 9540 2222

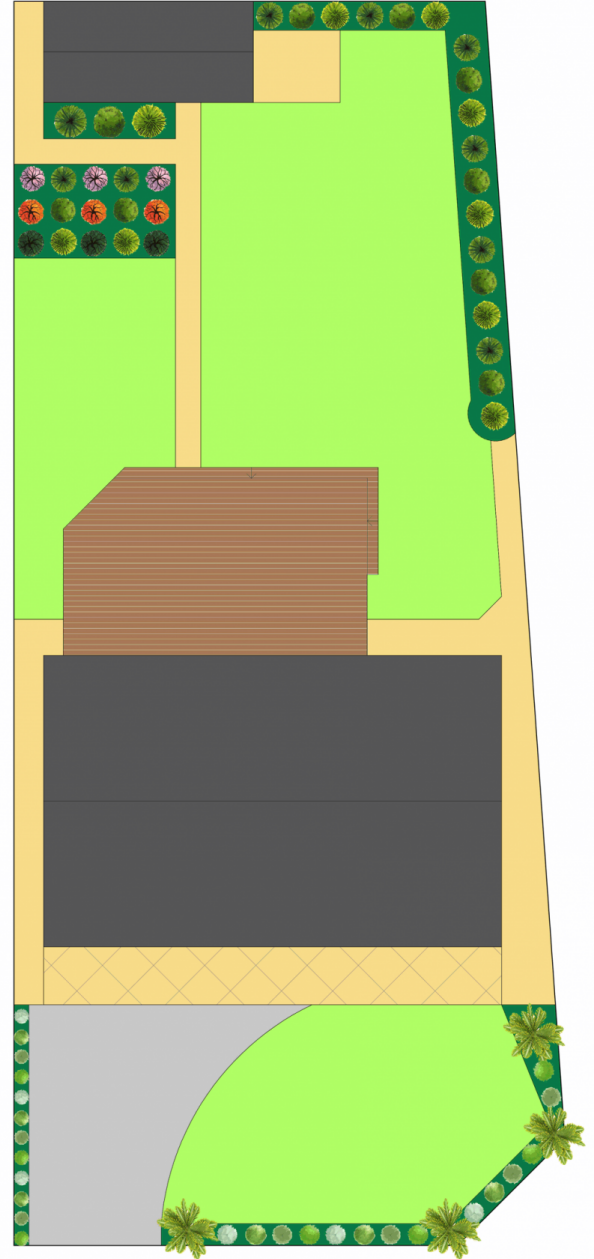
[For full version visit the website](https://www.jreproperty.com.au)



First Floor



Ground Floor



111 Kingswood Road, Engadine

DISCLAIMER: This is for illustrative purposes only. All dimensions are approximate and it does not constitute part of any legal documents.