



**19 Woonah Street MIRANDA NSW**

3 1 1

First time offered in over 35 years and original condition throughout presents the perfect opportunity for the buyer looking to roll up their sleeves and renovate to taste.

The floorplan accommodates a spacious living room, additional family room and combined dining area off the kitchen. Plenty of scope to extend and improve over the large level backyard with inground swimming pool and single lock up garage.

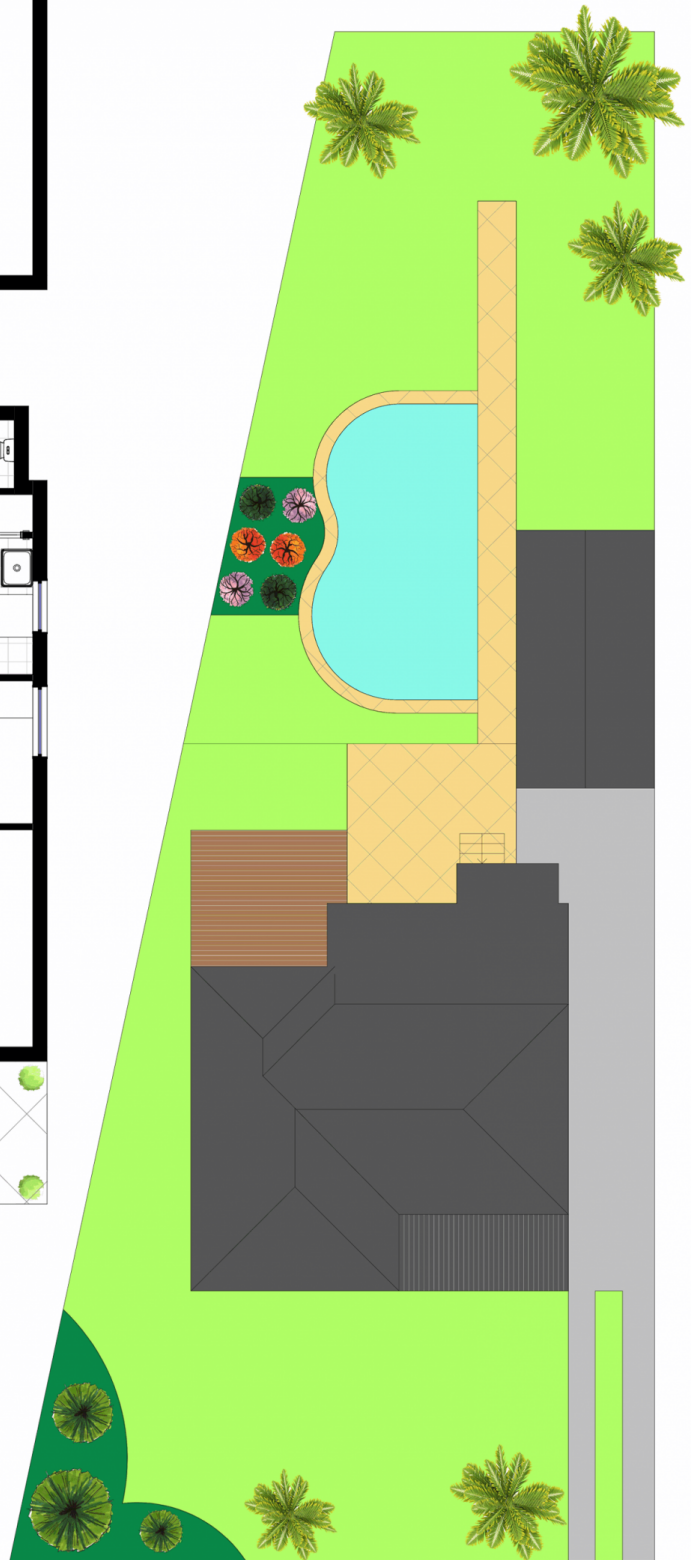
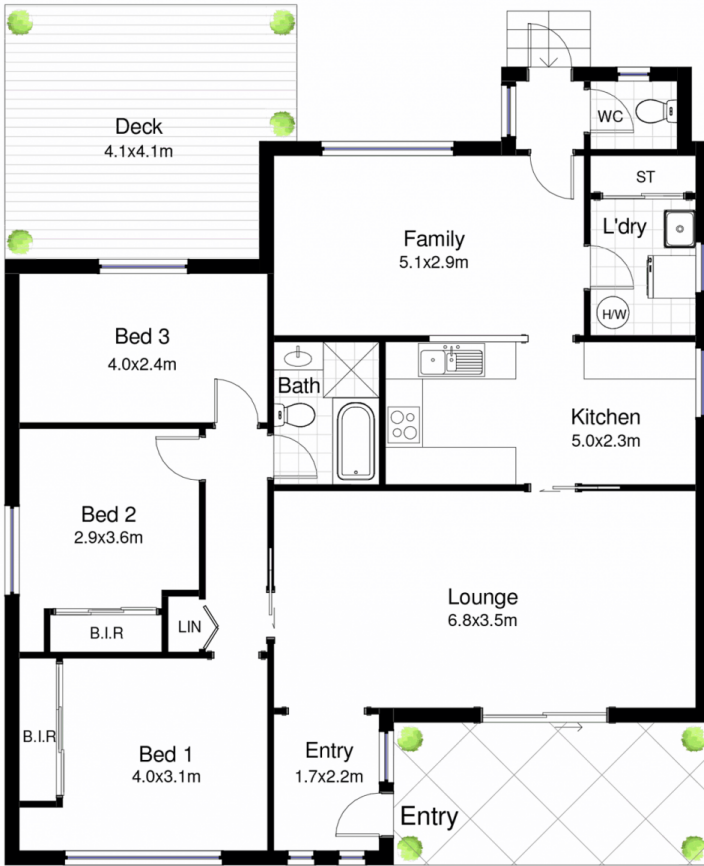
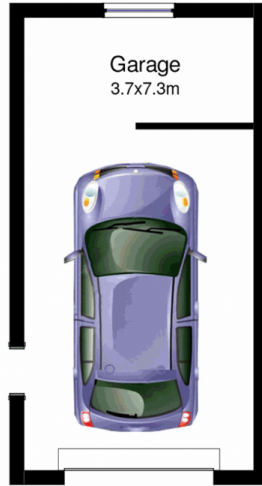
Situated in a quiet location within walking distance to the popular Miranda Westfield, shops and transport with land size of 695.6 and dimensions of 19.81 x 46.53 also offers the option to redevelop subject to Council approval.

**Type** : House  
**Land Size** : 695 sqm  
**View** : <https://www.jreproperty.com.au/sale/nsw/sutherlandland/miranda/residential/house/7488791>



**Luke Jeffree**  
02 9540 2222

[For full version visit the website](https://www.jreproperty.com.au)



## 19 Woonah Street, Miranda

DISCLAIMER: This is for illustrative purposes only. All dimensions are approximate and it does not constitute part of any legal documents.