



**24 Bathurst Street GYMEA NSW**

4 2 2

**GENEROUS FAMILY HOME WITH EXCELLENT ASPECT AND POTENTIAL**

Situated in a quiet central area and set on a 600m<sup>2</sup> parcel of land this two-storey brick residence is in original condition throughout and presents the opportunity for the buyer who is looking to renovate and design their next home.

Ground floor level provides a double lock up garage with internal access and storage, a fourth bedroom, large rumpus / additional living area, laundry, and bathroom with shower.

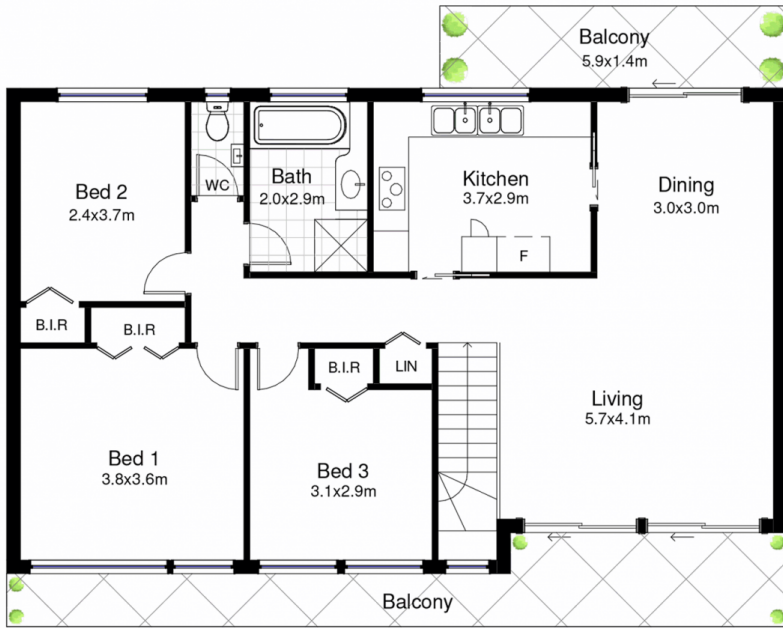
The second level accommodates three bedrooms,

[For full version visit the website](https://www.jreproperty.com.au)

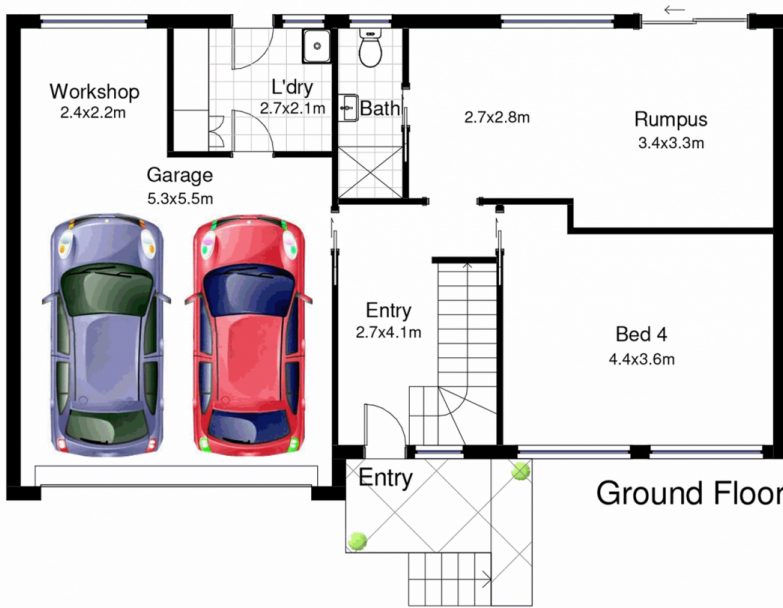
**Type** : House  
**Land Size** : 600 sqm  
**View** : <https://www.jreproperty.com.au/sale/nsw/sutherland/gyMEA/residential/house/7488788>



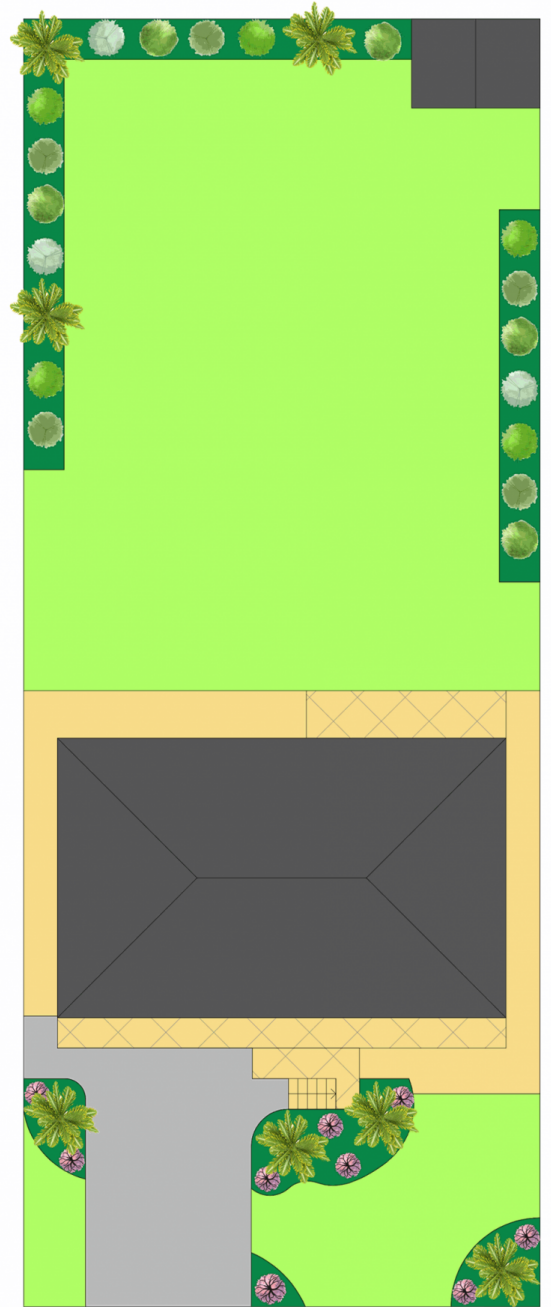
**Luke Jeffree**  
**02 9540 2222**



First Floor



Ground Floor



## 24 Bathurst Street, Gymea

DISCLAIMER: This is for illustrative purposes only. All dimensions are approximate and it does not constitute part of any legal documents.