



**17 Raglan Road MIRANDA NSW**

4 3 2

An amazing selection of truly inspired luxuries generally reserved for the affluence of water front and harbour side living is now made available in this central yet whisper quiet position, on the fringe of Yowie Bay and only minutes away from boating facilities. The highly desirable 828sqm flat block with a sun soaked, north facing backyard has rare dual street access, is ideally suited to boat & car enthusiasts alike. Appreciative home buyers will enjoy the abundance of 5 generous living areas, comprising of formal & informal dining, lounge, theatre & sensational alfresco entertaining room. Exquisitely detailed chef's kitchen plus a sensational main bathroom and 2 terrific en-suites. None of life's creature comforts have been overlooked from ducted air-conditioning, piped music, intercom and alarm. This is certainly something very special!

[For full version visit the website](https://www.jreproperty.com.au)

**Type** : House  
**Building Size** : 37 sqm  
**Land Size** : 828 sqm  
**View** : <https://www.jreproperty.com.au/sale/nsw/sutherland/miranda/residential/house/7488670>



**Luke Jeffree**  
02 9540 2222

Rear Access / Blackwood Street

Additional Information:

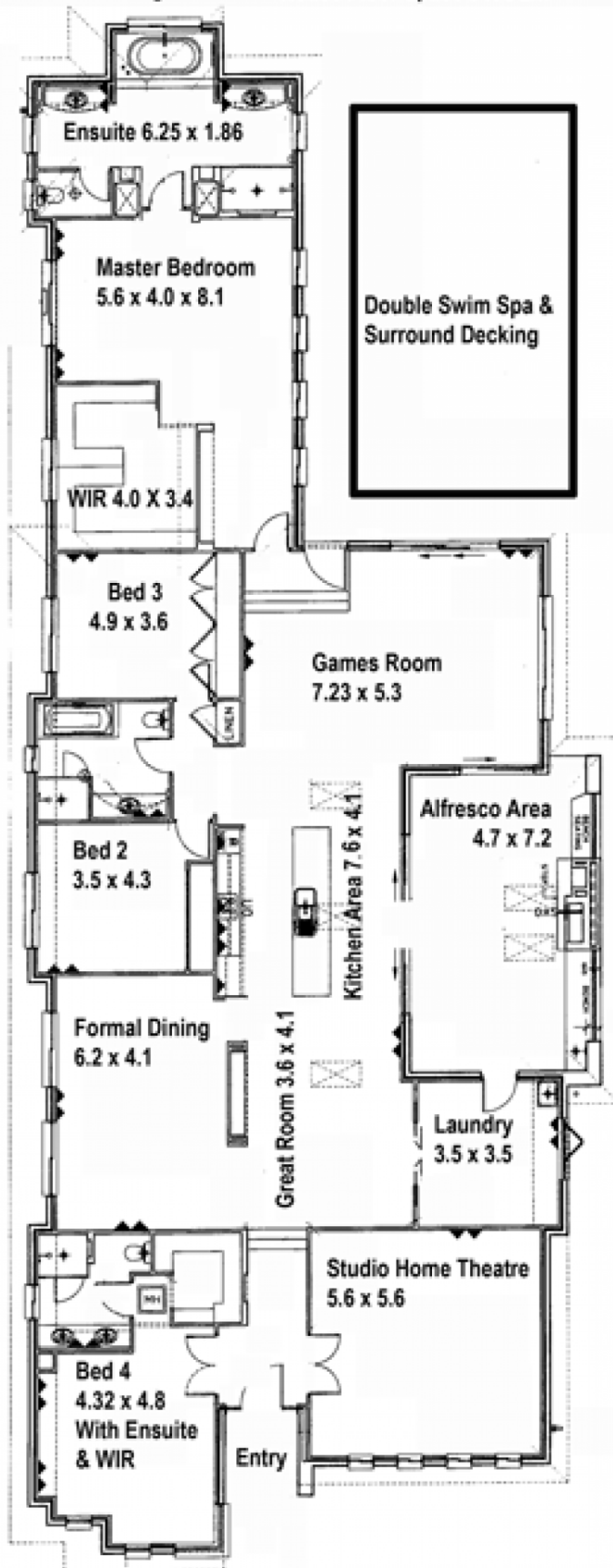
Street To Street Access

Garage Rear

Front Parking Slab

Land Size 831SQm

House Floor Space 340SQm-



ALL MEASUREMENTS ARE APPROXIMATE

While every attempt has been made to ensure the accuracy of the floor plan contained here, measurements of doors, windows, rooms and any other items are approximate and no responsibility is taken for any error, omission, or misstatement. This plan is for illustrative purposes only and should be used as such by any prospective purchaser. The services, systems and appliances shown here are not tested and no guarantee as to their operability or efficiency can be given. Marked fixtures may be inactive. Rooms with cupboards and wardrobes are measured wall to wall and usually exclude wardrobe and cupboard measurements.