

3 Susan Place GYMEA BAY NSW

4 🛏 2 🚿 1 🚗

Defined by an abundance of natural light, this fresh, sleek & stylish residence provides spectacular & wide appeal. Its easy care interior layout is generously proportioned combining perfectly with a private & generous alfresco area perfectly suited for the growing family or those who love to entertain.

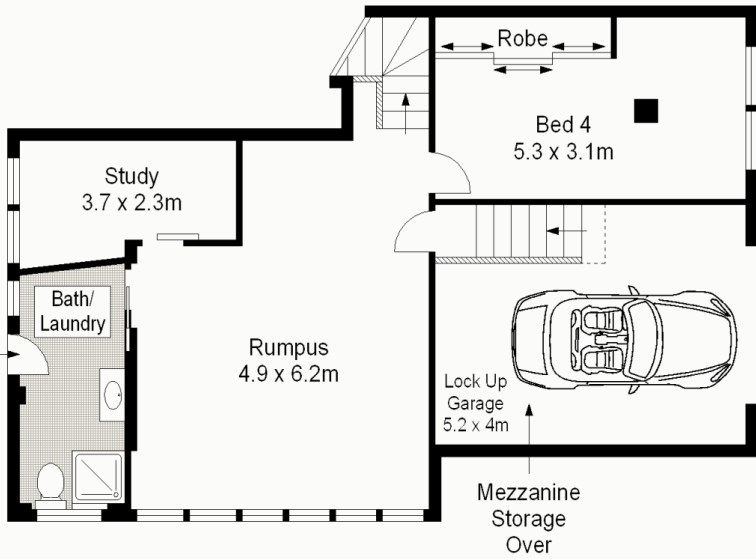
Type : House
Land Size : 626 sqm
View : <https://www.jreproperty.com.au/sale/nsw/sutherlandland/gymea-bay/residential/house/7488661>

- * Four generous bedrooms + study
- * Multiple separate living areas / plantation shutters
- * Gourmet kitchen with stone bench tops & dishwasher
- * Undercover entertaining area / low maintenance / children friendly
- * Updated over the last 2 years ready for you to move in / ducted air con
- * Single lock up garage with internal access and loft

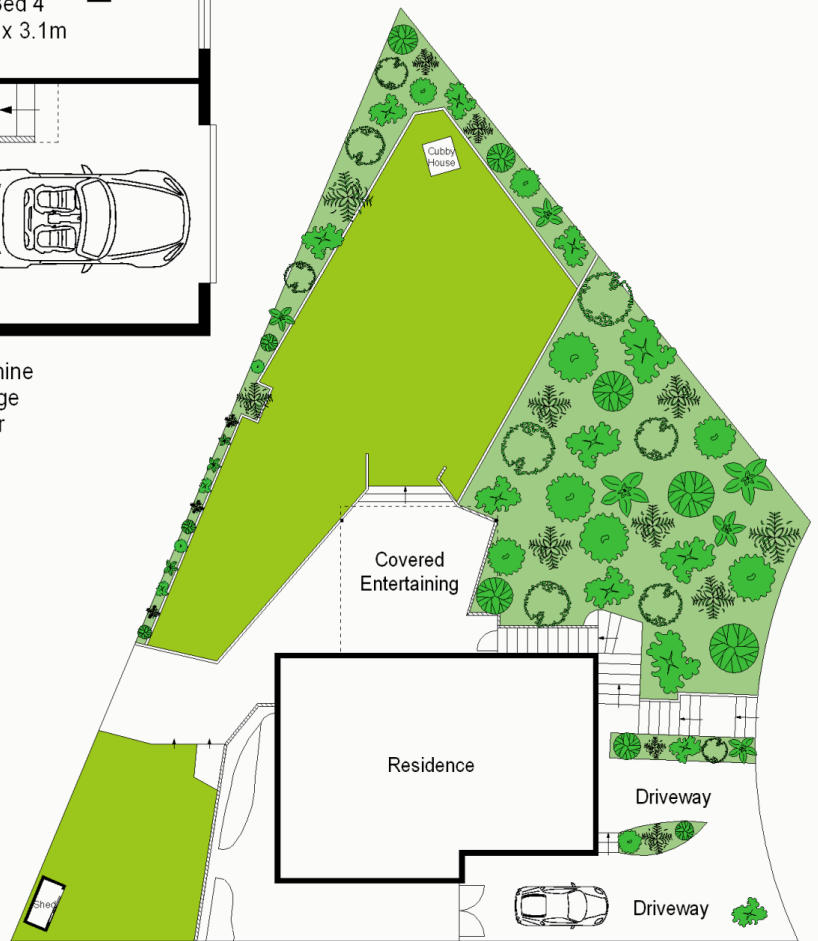


Dion Moon
02 9540 2222

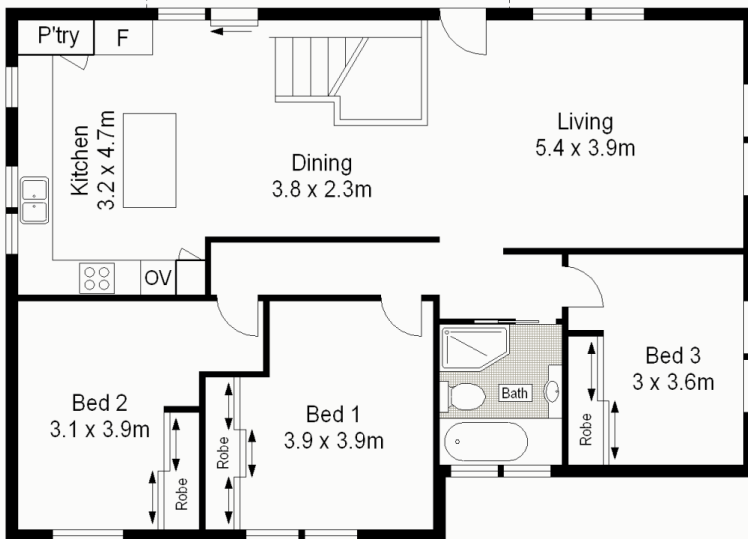
[For full version visit the website](https://www.jreproperty.com.au)



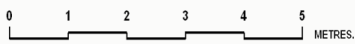
LOWER GROUND FLOOR



SITE PLAN (NOT TO SCALE)



GROUND FLOOR



Scale in metres. Indicative only. Dimensions are approximate. All information contained herein is gathered from sources we believe to be reliable. However we cannot guarantee its accuracy and interested persons should rely on their own enquiries.

