



**133 Manchester Road GYMEA NSW**

3 2 2

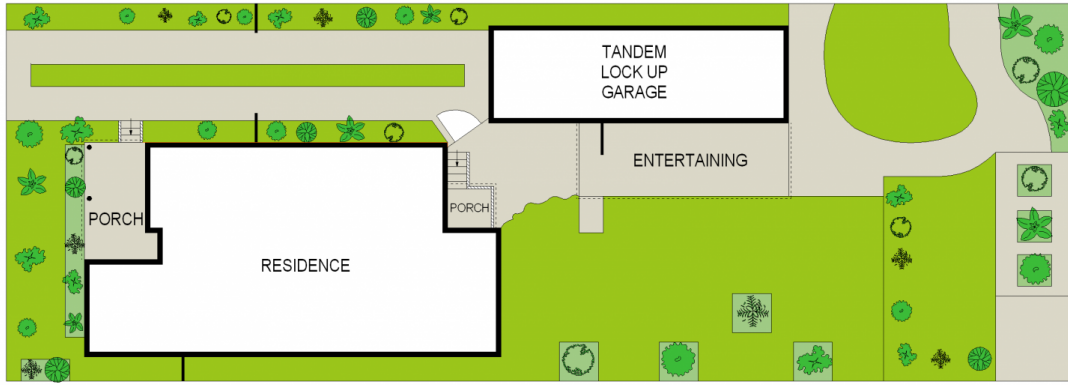
Resting on a level 653.9 sq (approx.) metre block, this family home oozes potential. Light filled and with separate living areas this property is perfect to be able to live in comfortably as is, refurbish or start afresh with a new home. Enjoying an idyllic location, quietly and peacefully set amongst quality properties within close proximity to all the Gymea has to offer.

- \* 3 bedrooms, main bedroom with BIR
- \* Light filled separate lounge & dining area
- \* Generous additional family room with split system air con
- \* Updated kitchen / 2 x bathrooms

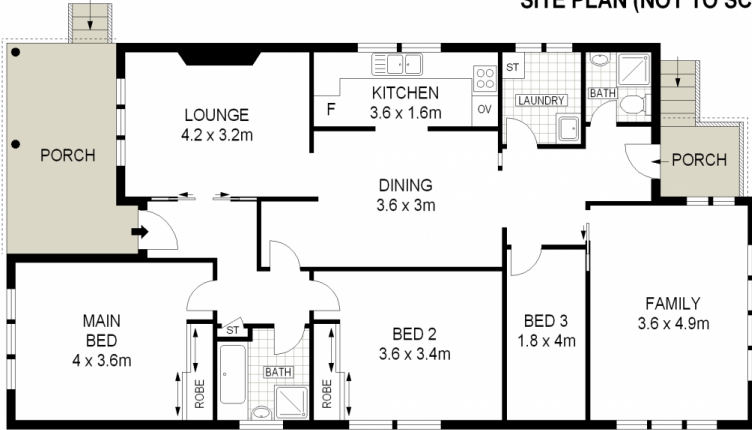
**Type** : House  
**Land Size** : 653.9 sqm  
**View** : <https://www.jreproperty.com.au/sale/nsw/sutherlandland/gymea/residential/house/7488659>



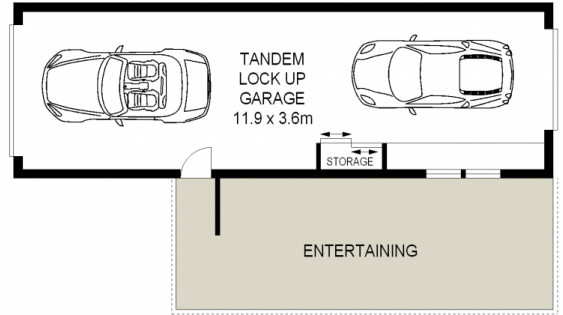
**Luke Jeffree**  
02 9540 2222



**SITE PLAN (NOT TO SCALE)**

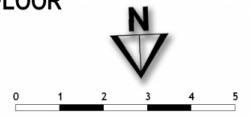


**GROUND FLOOR**



**GROUND FLOOR**

ADDRESS :  
**133 Manchester Road, GYMEA**



DISCLAIMER: THIS IS FOR ILLUSTRATIVE PURPOSES ONLY. ALL DIMENSIONS ARE APPROXIMATE AND IT DOES NOT CONSTITUTE PART OF ANY LEGAL DOCUMENTS.