

4/260-270 Kingsway CARINGBAH NSW

3 2 1

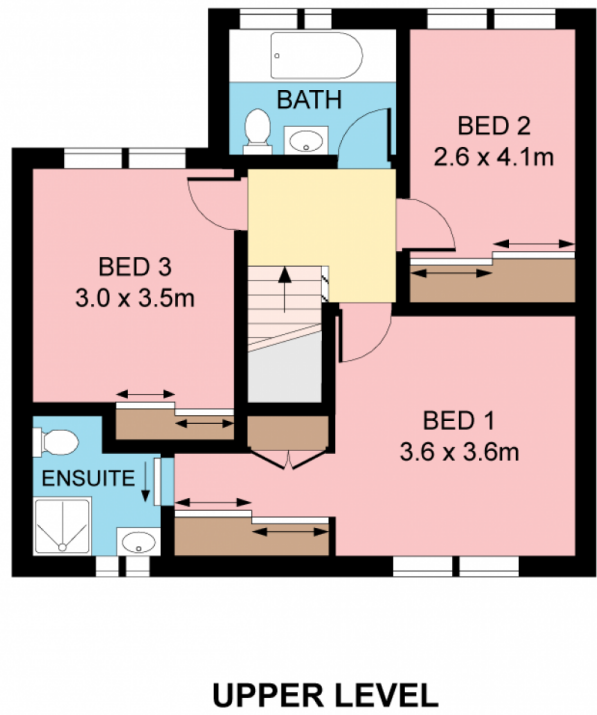
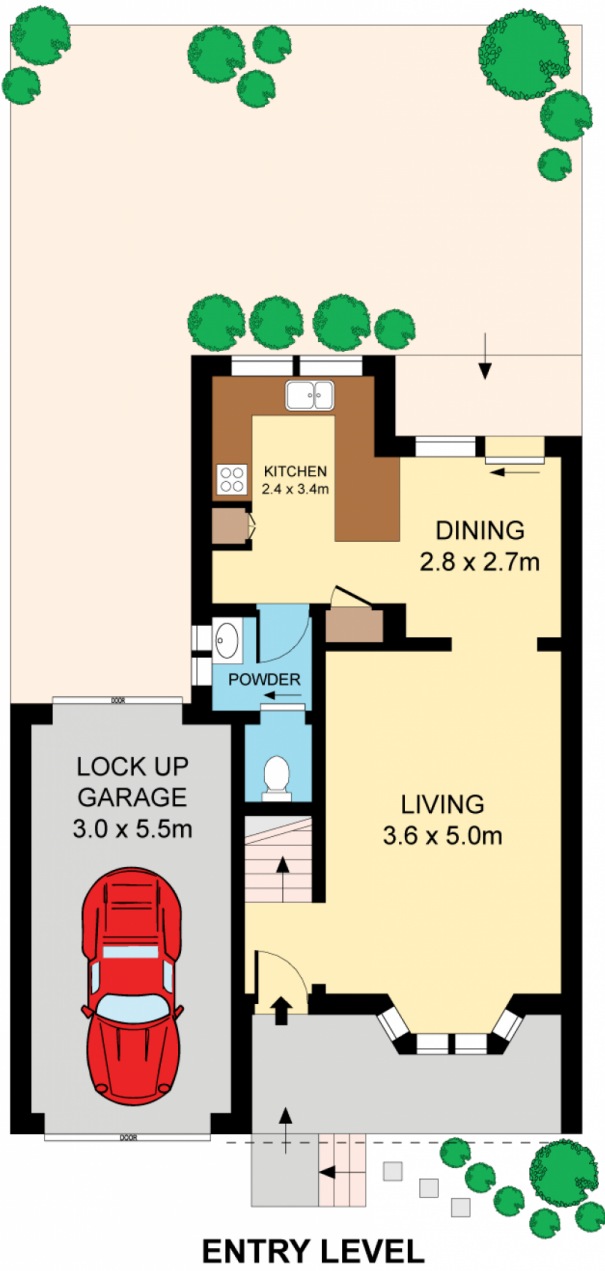
Set well back from the road and accessed via Yathong Road, this fresh townhouse will appeal with its generous dimensions, stylish presentation and peaceful setting. It offers family sized proportions including a large rear courtyard, lock up garage and additional secure parking. Enjoy the ultra-convenience just a stroll to the bus, rail and shops.

Type : Townhouse
Building Size : 203 sqm
View : <https://www.jreproperty.com.au/sale/nsw/sutherland/caringbah/residential/townhouse/748852>

Desirable north facing, light filled
 Generous family living, casual dining
 Modern kitchen, stainless appliances
 Fenced easycare alfresco courtyard
 Laundry/powder room, master with ensuite
 SLUG plus easy trailer/boat storage



Luke Jeffree
02 9540 2222



Plans shown are for presentation purposes only and are not part of any legal document or title. They are subject to errors, omissions, inaccuracies and should not be used as a sole and accurate reference. Interested parties should make their own inquiries using independent sources.

4/260 KINGSWAY

CARINGBAH