



295 Gymea Bay Road GYMEA BAY NSW

5 🛏 3 🚿 2 🚗

Excellent presented home and practical layout for families of all ages. Large and open lounge, dining and family rooms, flow to a Chefs kitchen. Main bedroom with bathroom and walk-in robe. Downstairs a large rumpus room, bathroom and 2 bedrooms. Double garage with huge workshop for a tradesman or handyman. Entertainment made easy with a covered rear area, in-ground pool and a massive north facing grass yard. This is a prestige residence! Room for everything.

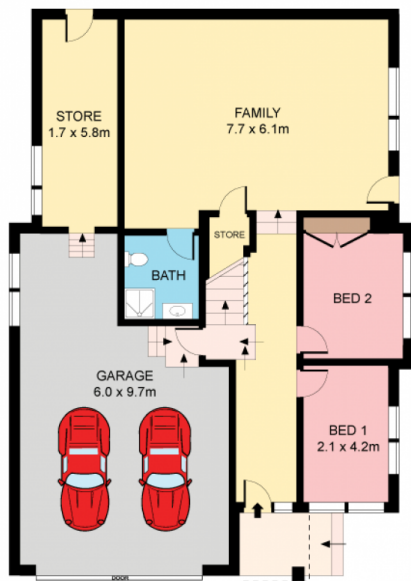
Type : House
Land Size : 887 sqm
View : <https://www.jreproperty.com.au/sale/nsw/sutherland/gymea-bay/residential/house/7488546>

All rooms are generously proportioned
 Home in Kirrawee High catchment
 Stone bench tops and gas kitchen
 Alfresco and poolside terrace



Luke Jeffree
02 9540 2222

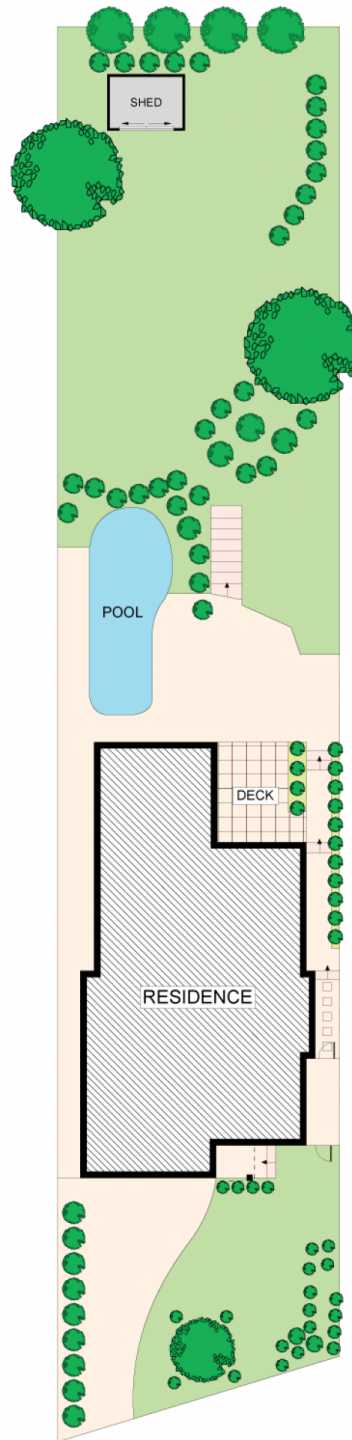
[For full version visit the website](https://www.jreproperty.com.au)



GROUND FLOOR



FIRST FLOOR



SITE PLAN (NOT TO SCALE)



Plans shown are for presentation purposes only and are not part of any legal document or title. They are subject to errors, omissions, inaccuracies and should not be used as a sole and accurate reference. Interested parties should make their own inquiries using independent sources.

