



117 Coonong Road GYMEA BAY NSW

3 1 1

PRICE GUIDE - \$800,000 plus

Possessing a perfect setting in a premium location, this clad home presents a ready made family environment with generous and immaculate interiors complimented by child friendly grounds and inviting alfresco spaces. Streaming with light it sits within the Kirrawee High catchment close to all amenities.

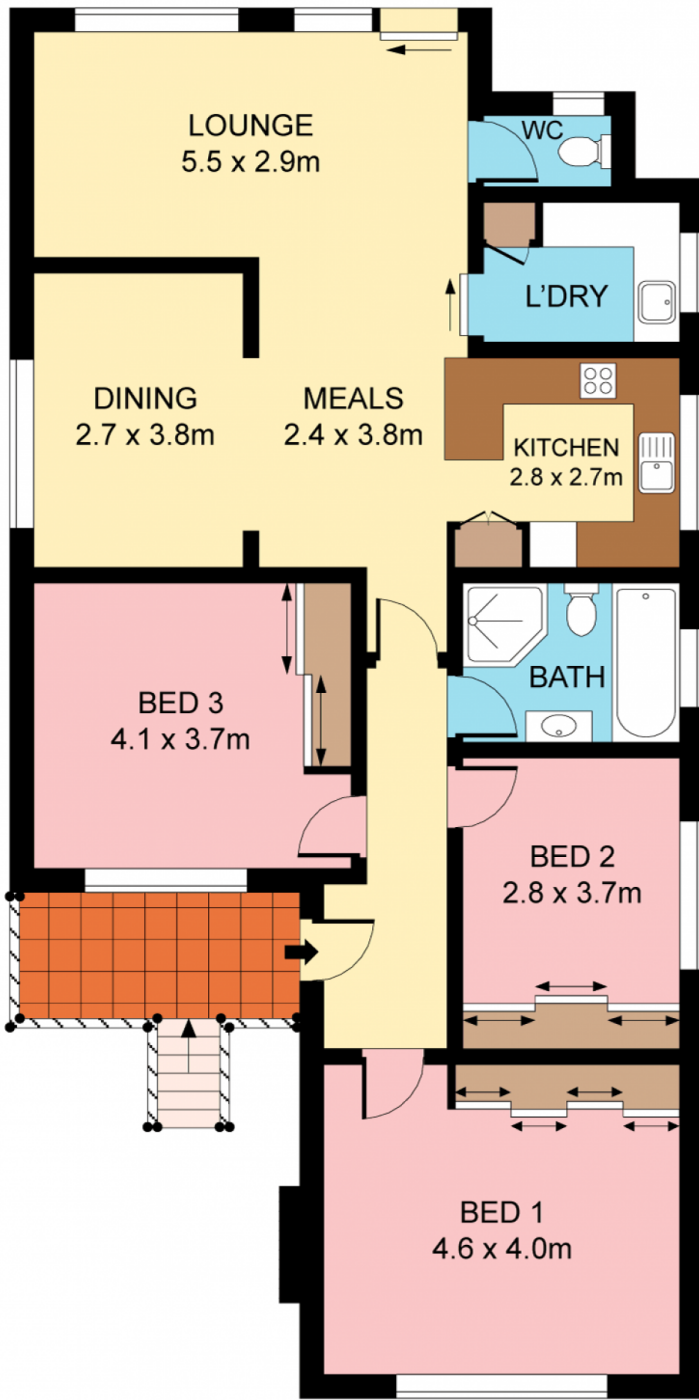
Type : House
Land Size : 626 sqm
View : <https://www.jreproperty.com.au/sale/nsw/sutherland/gymea-bay/residential/house/7488543>

- Timber floors, elevated and leafy setting
- Separate dining, generous family living
- Sleek stone kitchen, quality appliances
- Two covered alfresco terraces, powder room
- Large bedrooms, BIRS, garden shed, a/c
- Car space, front porch, mature gardens

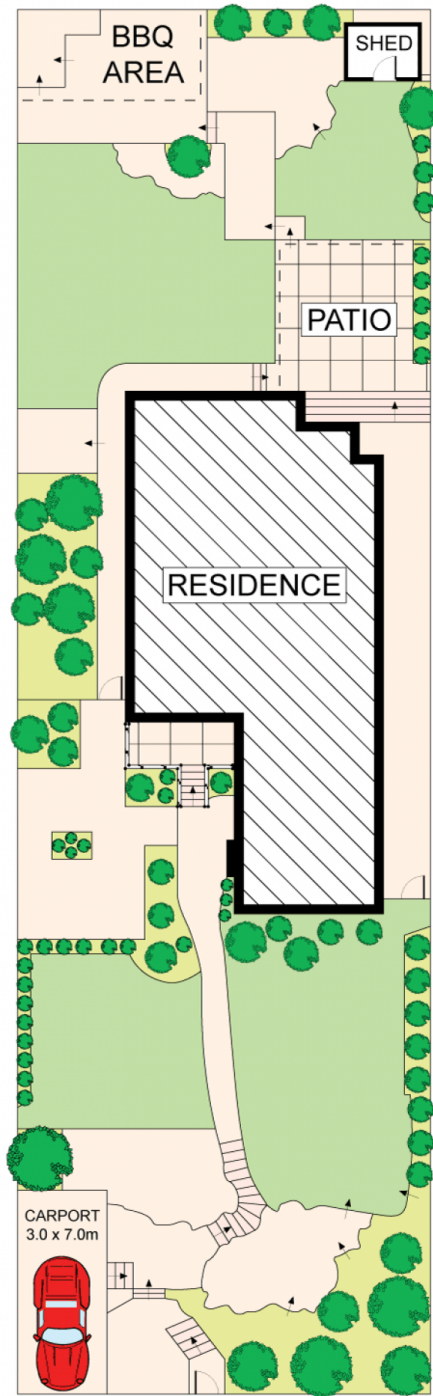


Luke Jeffree
02 9540 2222

[For full version visit the website](https://www.jreproperty.com.au)



GROUND FLOOR



**SITE PLAN
(NOT TO SCALE)**



Plans shown are for presentation purposes only and are not part of any legal document or title. They are subject to errors, omissions, inaccuracies and should not be used as a sole and accurate reference. Interested parties should make their own inquiries using independent sources.