

**296 Gymea Bay Road GYMEA BAY NSW**

3 3 2

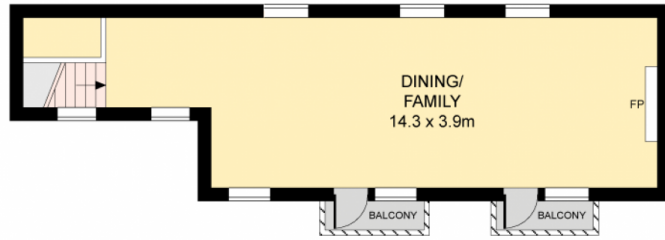
Peacefully placed in an exclusive bayside community, this substantial family residence has been lovingly cared for and upgraded over the years. Presented with style and class it provides a choice of expansive living spaces, a versatile lower level retreat with ensuite bathroom and beautiful easy care grounds. Stroll to Gymea Baths, parks and bus.

**Type** : House  
**Land Size** : 550.1 sqm  
**View** : <https://www.jreproperty.com.au/sale/nsw/sutherlandland/gymea-bay/residential/house/7488518>

Spacious lounge, casual living/dining  
 Granite kitchen, sunny alfresco deck  
 Expansive family room with gas fire  
 Three bedrooms with built in robes  
 Main with ensuite, teen retreat/study  
 North to rear, LUG, Kirrawee High catchment area.



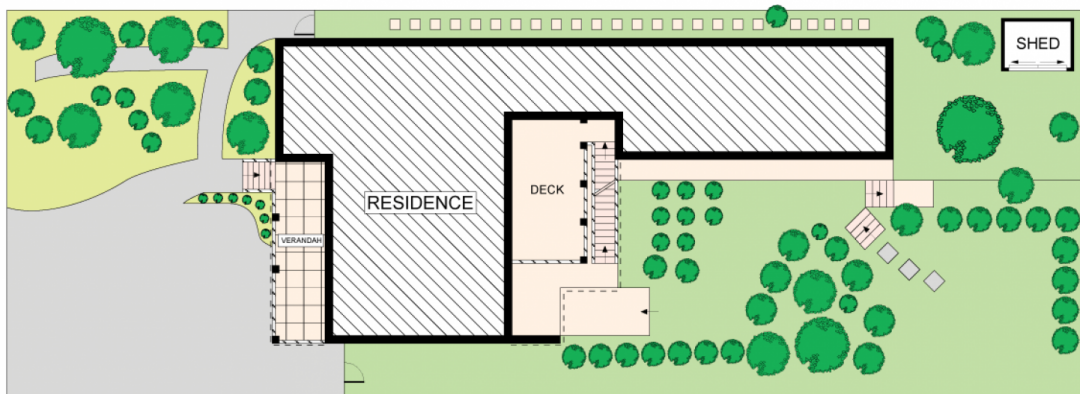
**Luke Jeffree**  
02 9540 2222



UPPER LEVEL



LOWER LEVEL



SITE PLAN (NOT TO SCALE)



Plans shown are for presentation purposes only and are not part of any legal document or title. They are subject to errors, omissions, inaccuracies and should not be used as a sole and accurate reference. Interested parties should make their own inquiries using independent sources.

296 GYMEA BAY ROAD

GYMEA BAY