



4 Arcadia Avenue Gymea Bay NSW

3 1 1

This original three bedroom cottage home is set on the high side of the street in this popular pocket of Gymea Bay. The property promotes an abundance of future potential to the astute renovator or someone who is looking to establish their dream home in a desired real estate locale. With only a short stroll to Gymea Bay Baths, local parks, schools & shops.

Type : House
Price : \$ 1,505,000
Land Size : 663.9 sqm
View : <https://www.jreproperty.com.au/sale/nsw/sutherland/gymea-bay/residential/house/7483064>

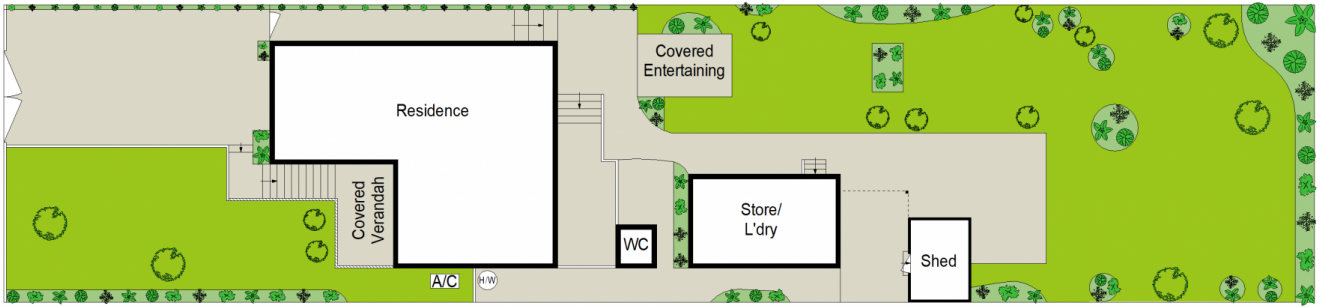
- * Original three bedroom home
- * 663.9m2 (12.19m x 54.86m)
- * Renovate / Knockdown Rebuild (STCA)
- * Position & Potential
- * Kirrawee High Catchment area



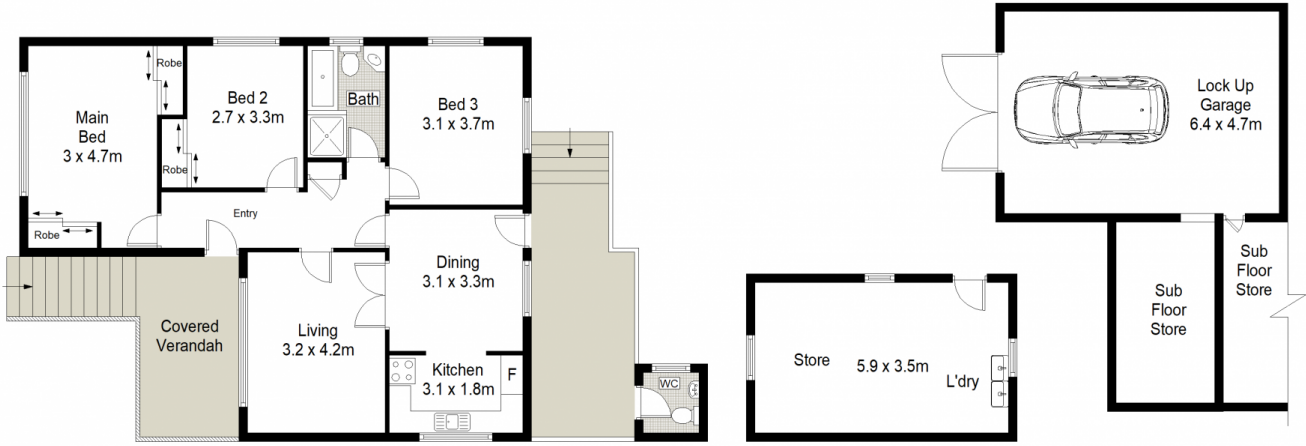
Luke Jeffree
02 9540 2222



Belinda Sanders
02 9540 2222



SITE PLAN (NOT TO SCALE)



GROUND FLOOR

LOWER GROUND FLOOR

CENTURY 21 Jeffree Real Estate



4 Arcadia Avenue, Gymea Bay

This diagram is for illustrative purpose only. All reasonable care has been taken in the preparation, but no warranty is given as to the accuracy of the information. This document does not constitute any part of any offer or contract. Dimensions shown are approximate only. Prospective purchasers must rely on their own enquiries.